

VICEROY BRICKELL

THE RESIDENCES

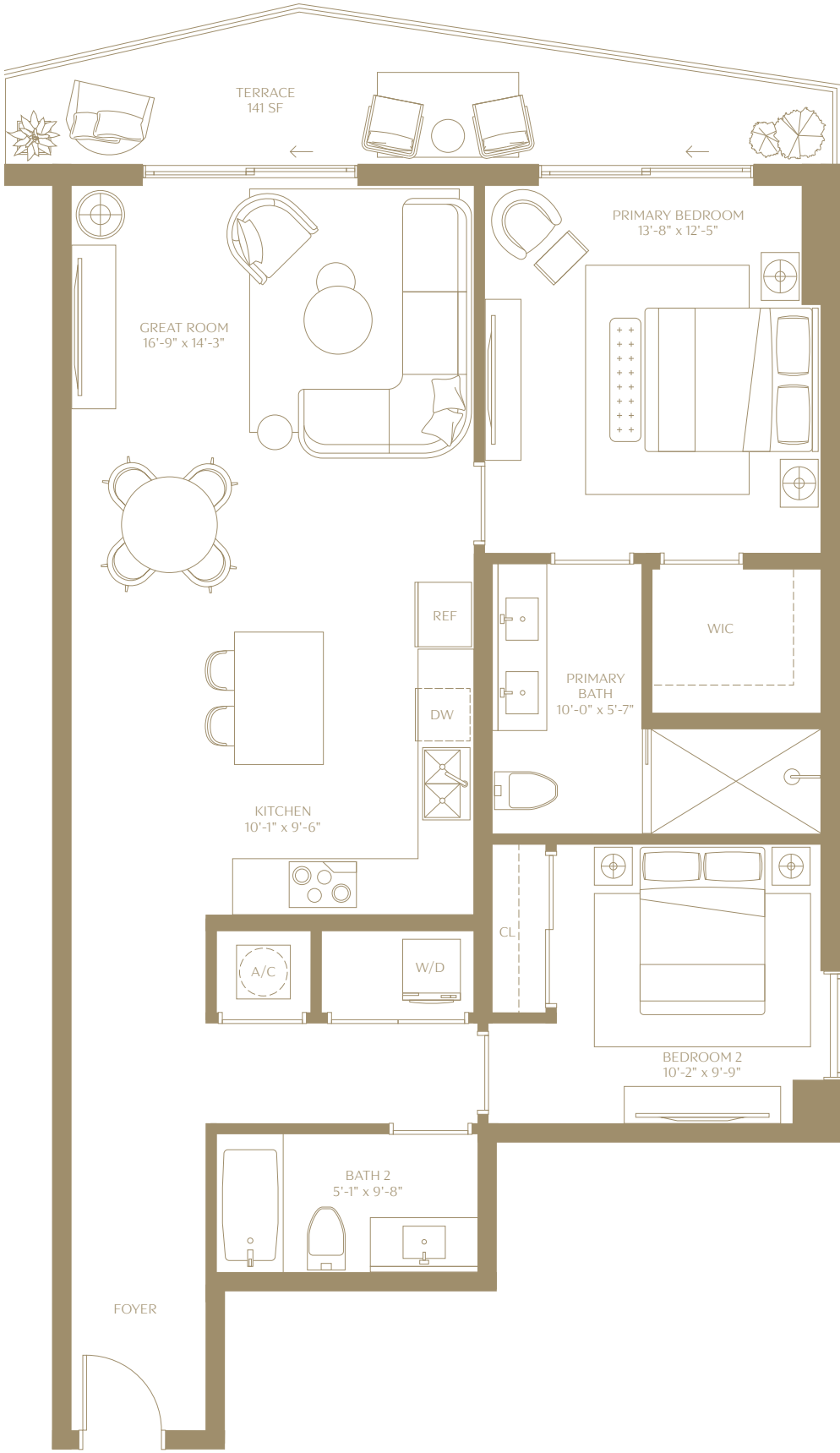
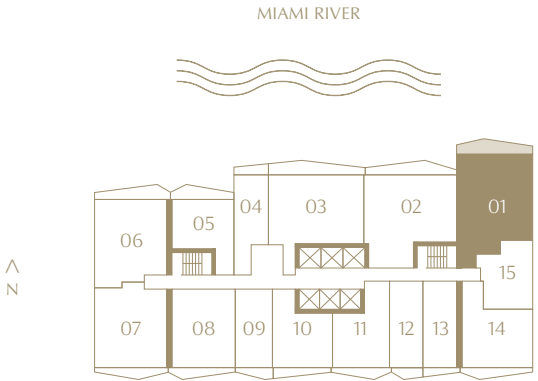
Residence 01

2 BEDROOMS | 2 BATHROOMS
LEVELS 15 TO 42
NORTHEAST EXPOSURE

INTERIOR
1,217 SQ. FT. | 113.06 SQM

TERRACE
141 SQ. FT. | 13.10 SQM

TOTAL
1,358 SQ. FT. | 113.06 SQM



ⓘ The dimensions stated for this floor plan are approximate because there are various recognized methods for calculating the square footage of a unit. The square footage stated here is calculated from the exterior boundaries of the exterior walls to the centerline of interior demising walls without deductions for cutouts, curves, or architectural features. This method typically results in quoted dimensions greater than the dimensions that would be determined by using other accepted methods. The definition of "Unit" and the calculation method to be relied upon is set forth by 444 BRICKELL TWO, LLC (the "Developer") in Developer's prospectus which method may result in a square footage calculation less than the result of the calculation method used here. VICEROY BRANDS, LLC owns the mark and name Viceroy®. The Developer is permitted to use the name and logo of The Related Group® and Viceroy® pursuant to license agreements which are valid unless terminated or expired; neither The Related Group nor Viceroy Brands, LLC are the Developer. Consult the Developer's prospectus to learn what is included with Unit purchase and to understand Unit dimensions. 2024 © 444 BRICKELL TWO, LLC with all rights reserved.

VICEROY BRICKELL

THE RESIDENCES

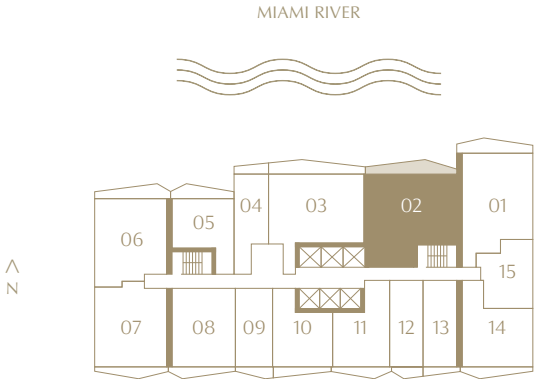
Residence 02

2 BEDROOMS | 2 BATHROOMS
LEVELS 15 TO 42
NORTH EXPOSURE

INTERIOR
1,286 SQ. FT. | 119.47 SQM

TERRACE
161 SQ. FT. | 14.96 SQM

TOTAL
1,447 SQ. FT. | 134.43 SQM



Ⓜ The dimensions stated for this floor plan are approximate because there are various recognized methods for calculating the square footage of a unit. The square footage stated here is calculated from the exterior boundaries of the exterior walls to the centerline of interior demising walls without deductions for cutouts, curves, or architectural features. This method typically results in quoted dimensions greater than the dimensions that would be determined by using other accepted methods. The definition of "Unit" and the calculation method to be relied upon is set forth by 444 BRICKELL TWO, LLC (the "Developer") in Developer's prospectus which method may result in a square footage calculation less than the result of the calculation method used here. VICEROY BRANDS, LLC owns the mark and name Viceroy®. The Developer is permitted to use the name and logo of The Related Group® and Viceroy® pursuant to license agreements which are valid unless terminated or expired; neither The Related Group nor Viceroy Brands, LLC are the Developer. Consult the Developer's prospectus to learn what is included with Unit purchase and to understand Unit dimensions. 2024 © 444 BRICKELL TWO, LLC with all rights reserved.

VICEROY BRICKELL

THE RESIDENCES

Residence 03

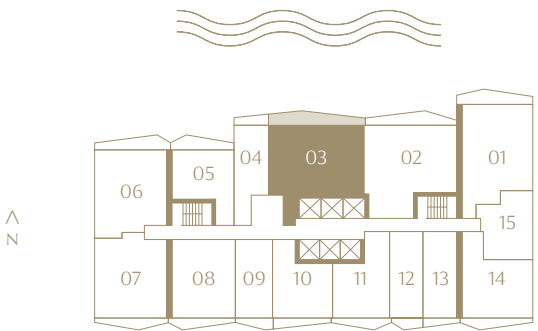
2 BEDROOMS | 2 BATHROOMS
LEVELS 15 TO 42
NORTH EXPOSURE

INTERIOR
1,235 SQ. FT. | 114.74 SQM

TERRACE
187 SQ. FT. | 17.37 SQM

TOTAL
1,422 SQ. FT. | 132.11 SQM

MIAMI RIVER



Ⓔ The dimensions stated for this floor plan are approximate because there are various recognized methods for calculating the square footage of a unit. The square footage stated here is calculated from the exterior boundaries of the exterior walls to the centerline of interior demising walls without deductions for cutouts, curves, or architectural features. This method typically results in quoted dimensions greater than the dimensions that would be determined by using other accepted methods. The definition of "Unit" and the calculation method to be relied upon is set forth by 444 BRICKELL TWO, LLC (the "Developer") in Developer's prospectus which method may result in a square footage calculation less than the result of the calculation method used here. VICEROY BRANDS, LLC owns the mark and name Viceroy®. The Developer is permitted to use the name and logo of The Related Group® and Viceroy® pursuant to license agreements which are valid unless terminated or expired; neither The Related Group nor Viceroy Brands, LLC are the Developer. Consult the Developer's prospectus to learn what is included with Unit purchase and to understand Unit dimensions. 2024 © 444 BRICKELL TWO, LLC with all rights reserved.

VICEROY BRICKELL

THE RESIDENCES

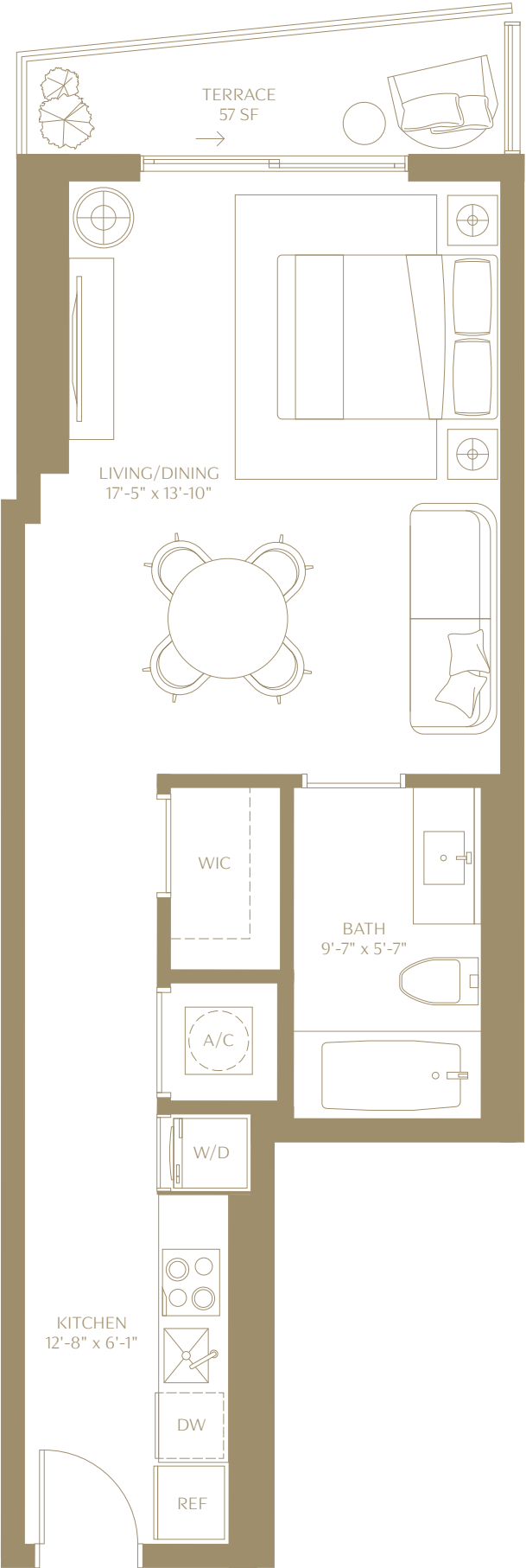
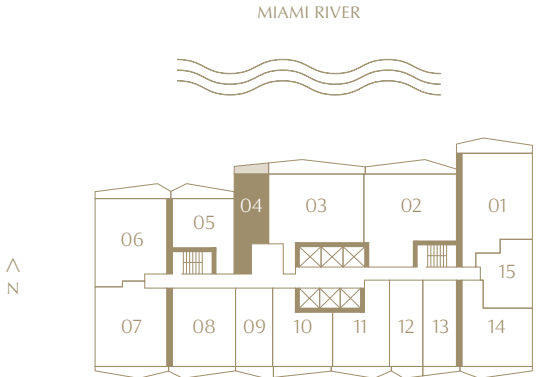
Residence 04

STUDIO | 1 BATHROOM
LEVELS 15 TO 42
NORTH EXPOSURE

INTERIOR
519 SQ. FT. | 48.22 SQM

TERRACE
57 SQ. FT. | 5.30 SQM

TOTAL
576 SQ. FT. | 53.51 SQM



Ⓔ The dimensions stated for this floor plan are approximate because there are various recognized methods for calculating the square footage of a unit. The square footage stated here is calculated from the exterior boundaries of the exterior walls to the centerline of interior demising walls without deductions for cutouts, curves, or architectural features. This method typically results in quoted dimensions greater than the dimensions that would be determined by using other accepted methods. The definition of "Unit" and the calculation method to be relied upon is set forth by 444 BRICKELL TWO, LLC (the "Developer") in Developer's prospectus which method may result in a square footage calculation less than the result of the calculation method used here. VICEROY BRANDS, LLC owns the mark and name Viceroy®. The Developer is permitted to use the name and logo of The Related Group® and Viceroy® pursuant to license agreements which are valid unless terminated or expired; neither The Related Group nor Viceroy Brands, LLC are the Developer. Consult the Developer's prospectus to learn what is included with Unit purchase and to understand Unit dimensions. 2024 © 444 BRICKELL TWO, LLC with all rights reserved.

VICEROY BRICKELL

THE RESIDENCES

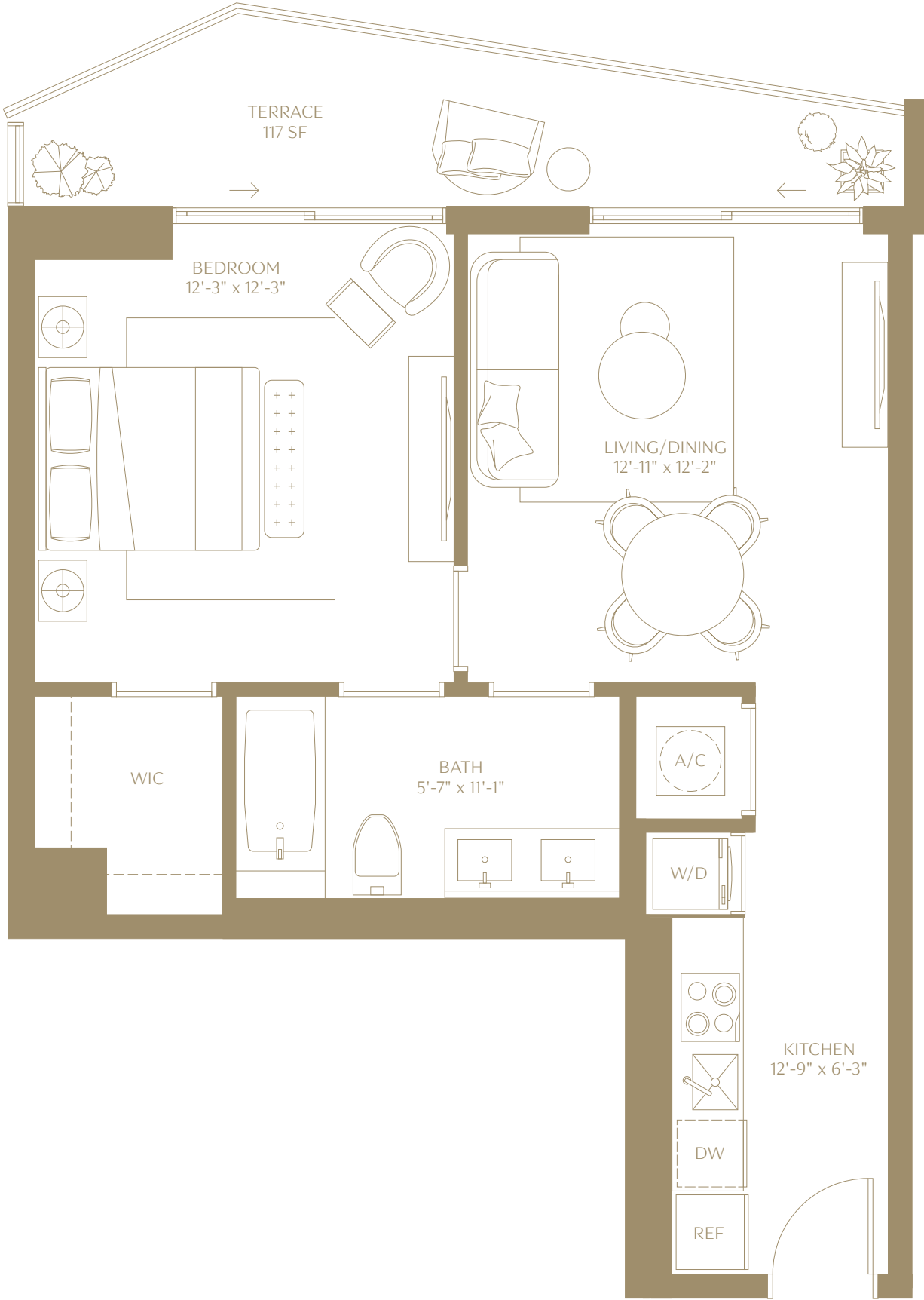
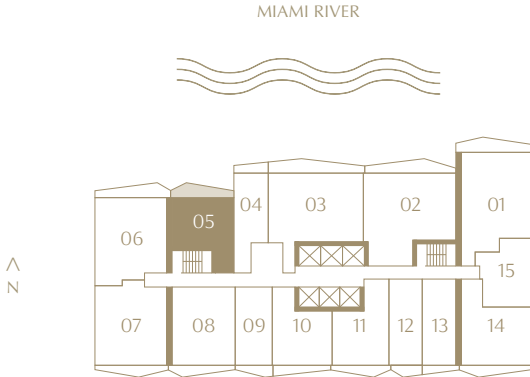
Residence 05

1 BEDROOM | 1 BATHROOM
LEVELS 15 TO 42
NORTH EXPOSURE

INTERIOR
670 SQ. FT. | 62.25 SQM

TERRACE
117 SQ. FT. | 10.87 SQM

TOTAL
787 SQ. FT. | 73.25 SQM



ⓘ The dimensions stated for this floor plan are approximate because there are various recognized methods for calculating the square footage of a unit. The square footage stated here is calculated from the exterior boundaries of the exterior walls to the centerline of interior demising walls without deductions for cutouts, curves, or architectural features. This method typically results in quoted dimensions greater than the dimensions that would be determined by using other accepted methods. The definition of "Unit" and the calculation method to be relied upon is set forth by 444 BRICKELL TWO, LLC (the "Developer") in Developer's prospectus which method may result in a square footage calculation less than the result of the calculation method used here. VICEROY BRANDS, LLC owns the mark and name Viceroy®. The Developer is permitted to use the name and logo of The Related Group® and Viceroy® pursuant to license agreements which are valid unless terminated or expired; neither The Related Group nor Viceroy Brands, LLC are the Developer. Consult the Developer's prospectus to learn what is included with Unit purchase and to understand Unit dimensions. 2024 © 444 BRICKELL TWO, LLC with all rights reserved.

VICEROY BRICKELL

THE RESIDENCES

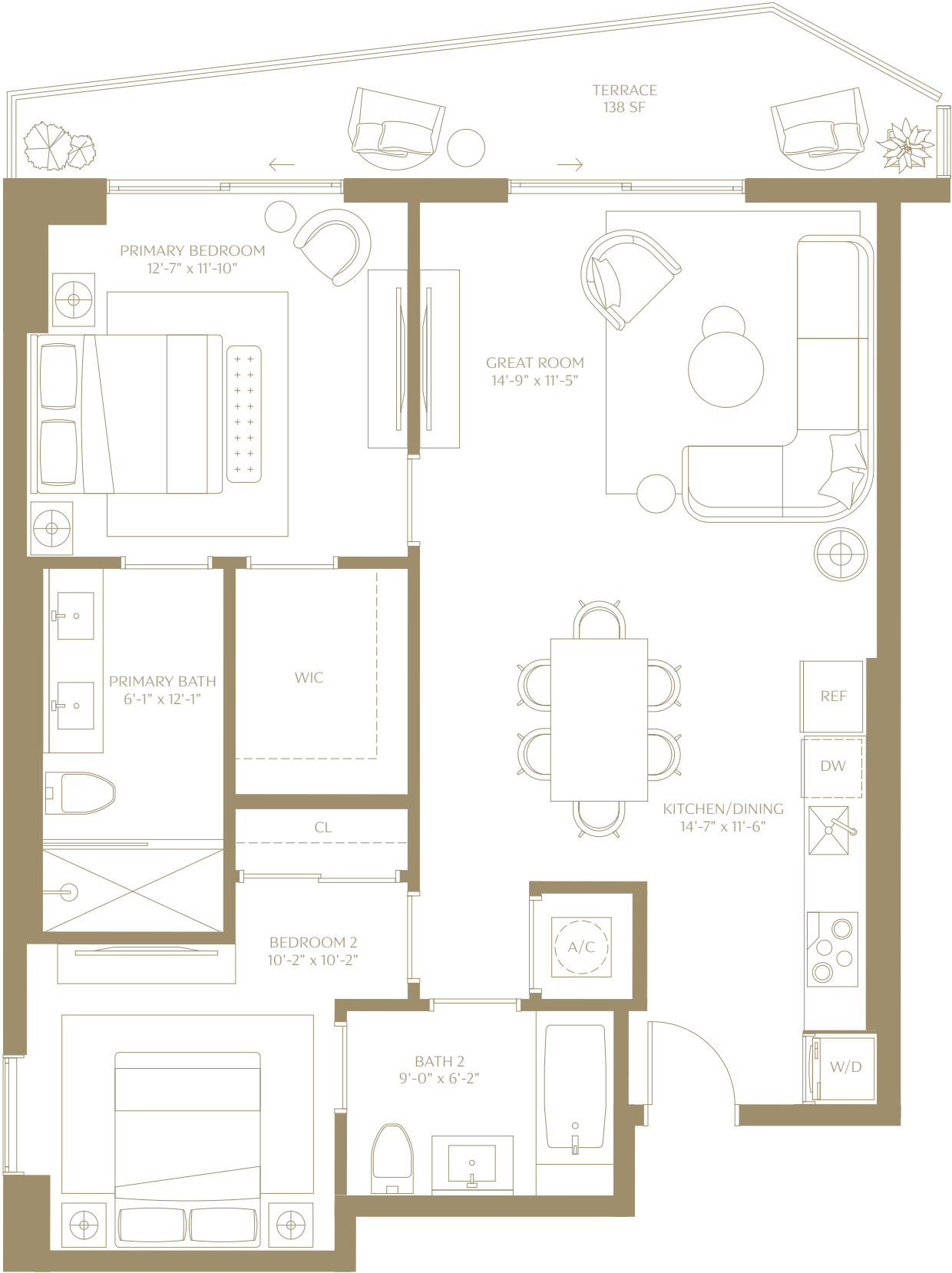
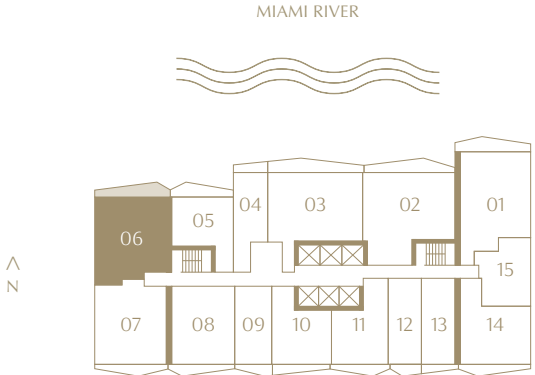
Residence 06

2 BEDROOMS | 2 BATHROOMS
LEVELS 15 TO 42
NORTHWEST EXPOSURE

INTERIOR
1,041 SQ. FT. | 96.71 SQM

TERRACE
138 SQ. FT. | 12.82 SQM

TOTAL
1,179 SQ. FT. | 109.53 SQM



Ⓔ The dimensions stated for this floor plan are approximate because there are various recognized methods for calculating the square footage of a unit. The square footage stated here is calculated from the exterior boundaries of the exterior walls to the centerline of interior demising walls without deductions for cutouts, curves, or architectural features. This method typically results in quoted dimensions greater than the dimensions that would be determined by using other accepted methods. The definition of "Unit" and the calculation method to be relied upon is set forth by 444 BRICKELL TWO, LLC (the "Developer") in Developer's prospectus which method may result in a square footage calculation less than the result of the calculation method used here. VICEROY BRANDS, LLC owns the mark and name Viceroy®. The Developer is permitted to use the name and logo of The Related Group® and Viceroy® pursuant to license agreements which are valid unless terminated or expired; neither The Related Group nor Viceroy Brands, LLC are the Developer. Consult the Developer's prospectus to learn what is included with Unit purchase and to understand Unit dimensions. 2024 © 444 BRICKELL TWO, LLC with all rights reserved.

VICEROY BRICKELL

THE RESIDENCES

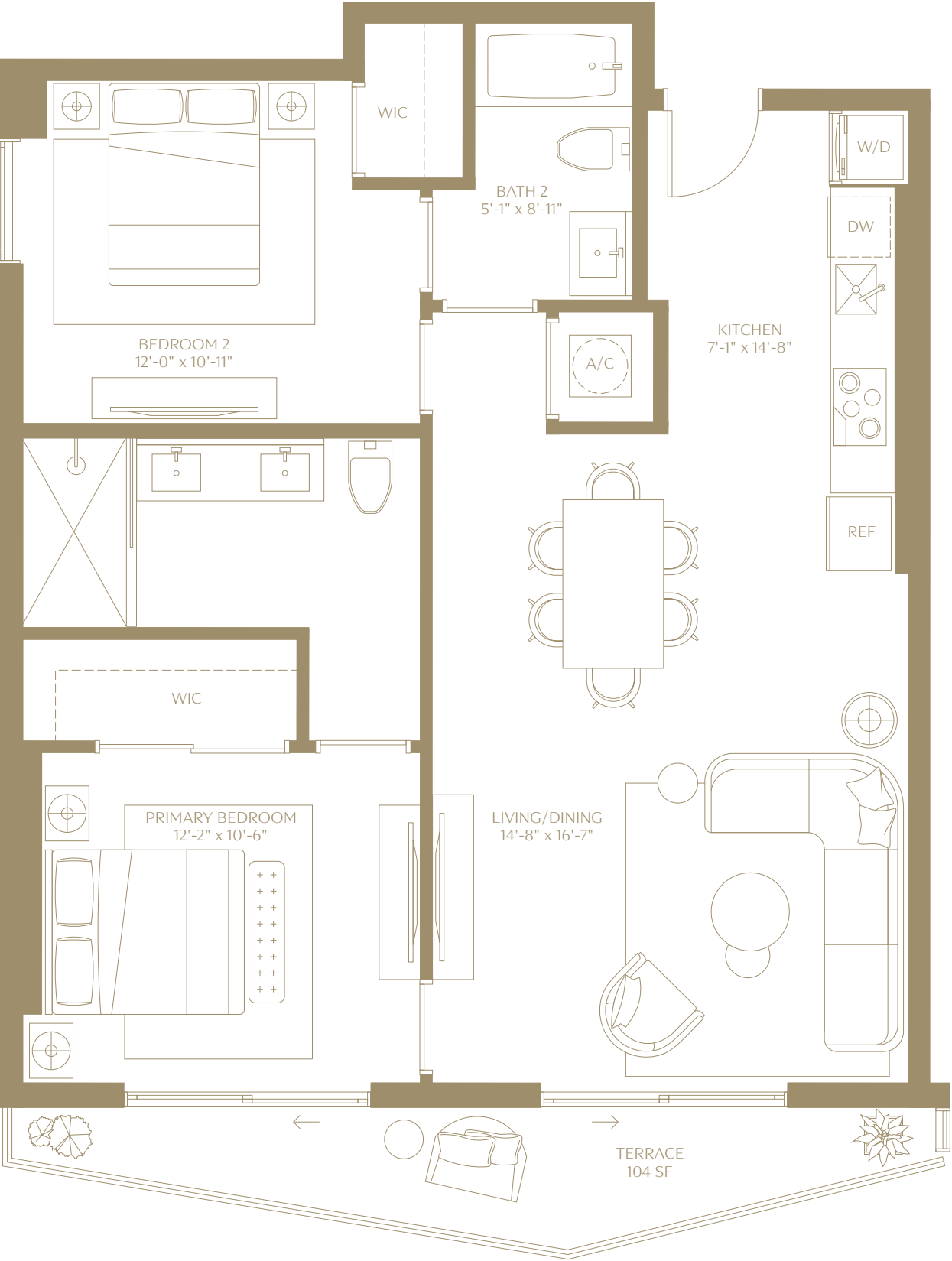
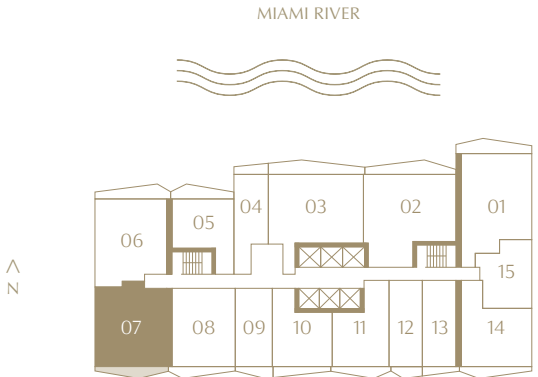
Residence 07

2 BEDROOMS | 2 BATHROOMS
LEVELS 15 TO 42
SOUTHWEST EXPOSURE

INTERIOR
1,030 SQ. FT. | 95.69 SQM

TERRACE
104 SQ. FT. | 9.66 SQM

TOTAL
1,134 SQ. FT. | 105.35 SQM



ⓘ The dimensions stated for this floor plan are approximate because there are various recognized methods for calculating the square footage of a unit. The square footage stated here is calculated from the exterior boundaries of the exterior walls to the centerline of interior demising walls without deductions for cutouts, curves, or architectural features. This method typically results in quoted dimensions greater than the dimensions that would be determined by using other accepted methods. The definition of "Unit" and the calculation method to be relied upon is set forth by 444 BRICKELL TWO, LLC (the "Developer") in Developer's prospectus which method may result in a square footage calculation less than the result of the calculation method used here. VICEROY BRANDS, LLC owns the mark and name Viceroy®. The Developer is permitted to use the name and logo of The Related Group® and Viceroy® pursuant to license agreements which are valid unless terminated or expired; neither The Related Group nor Viceroy Brands, LLC are the Developer. Consult the Developer's prospectus to learn what is included with Unit purchase and to understand Unit dimensions. 2024 © 444 BRICKELL TWO, LLC with all rights reserved.

VICEROY BRICKELL

THE RESIDENCES

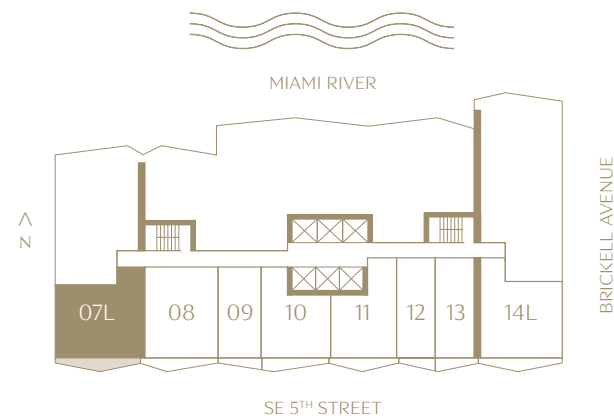
Residence 07L

1 BEDROOMS | 1 BATHROOMS
LEVELS 2 TO 12
SOUTHWEST EXPOSURE

INTERIOR
871 SQ. FT. | 80.92 SQM

TERRACE
104 SQ. FT. | 9.66 SQM

TOTAL
975 SQ. FT. | 90.58 SQM



The dimensions stated for this floor plan are approximate because there are various recognized methods for calculating the square footage of a unit. The square footage stated here is calculated from the exterior boundaries of the exterior walls to the centerline of interior demising walls without deductions for cutouts, curves, or architectural features. This method typically results in quoted dimensions greater than the dimensions that would be determined by using other accepted methods. The definition of "Unit" and the calculation method to be relied upon is set forth by 444 BRICKELL TWO, LLC (the "Developer") in Developer's prospectus which method may result in a square footage calculation less than the result of the calculation method used here. VICEROY BRANDS, LLC owns the mark and name Viceroy®. The Developer is permitted to use the name and logo of The Related Group® and Viceroy® pursuant to license agreements which are valid unless terminated or expired; neither The Related Group nor Viceroy Brands, LLC are the Developer. Consult the Developer's prospectus to learn what is included with Unit purchase and to understand Unit dimensions. 2024 © 444 BRICKELL TWO, LLC with all rights reserved.

VICEROY BRICKELL

THE RESIDENCES

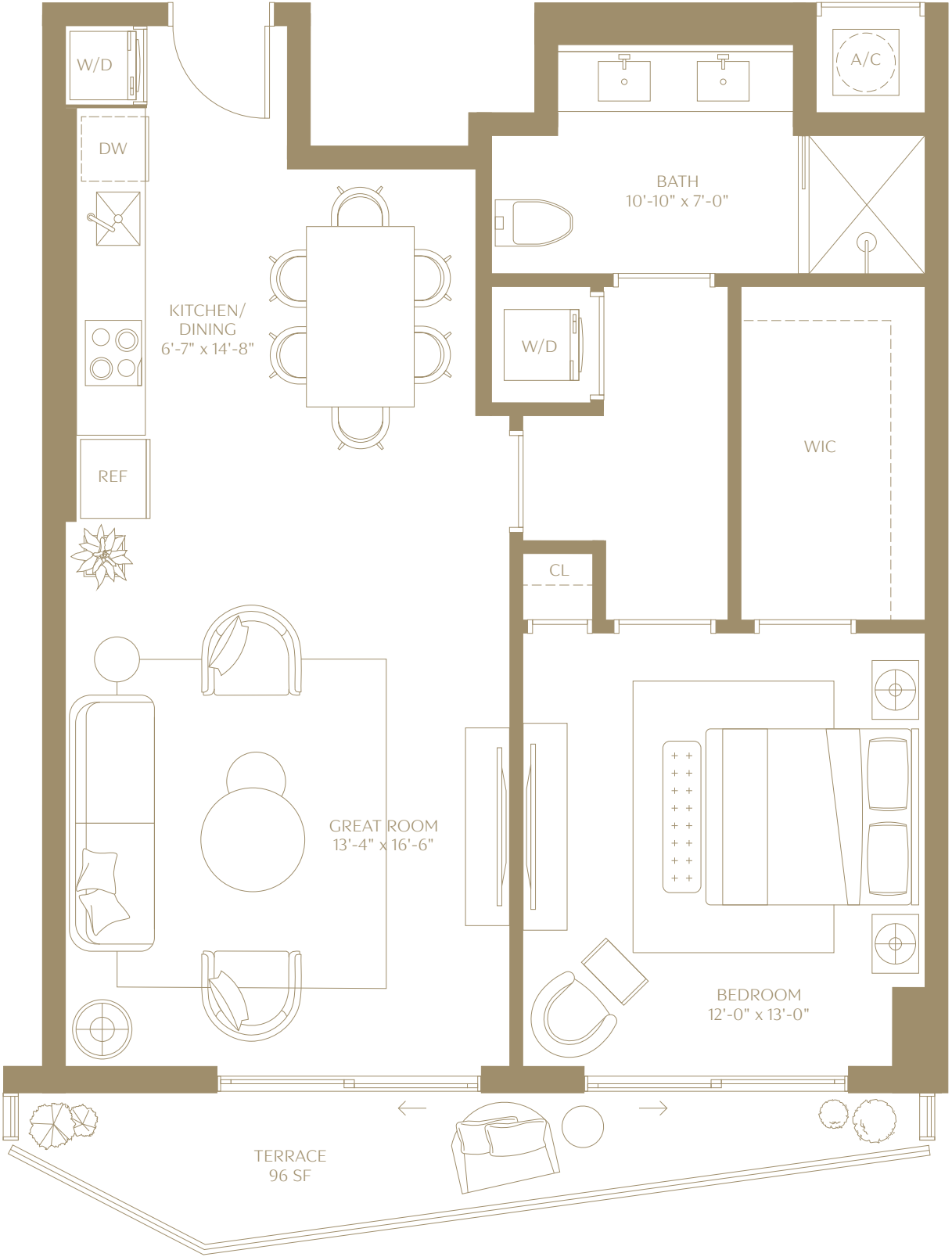
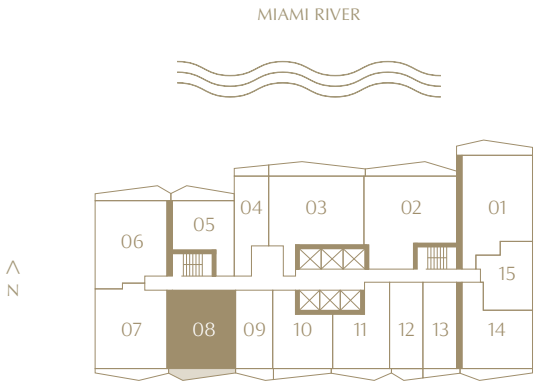
Residence 08

1 BEDROOM | 1 BATHROOM
 LEVELS 15 TO 42
 SOUTH EXPOSURE

INTERIOR
 862 SQ. FT. | 80.08 SQM

TERRACE
 96 SQ. FT. | 8.92 SQM

TOTAL
 958 SQ. FT. | 89 SQM



ⓘ The dimensions stated for this floor plan are approximate because there are various recognized methods for calculating the square footage of a unit. The square footage stated here is calculated from the exterior boundaries of the exterior walls to the centerline of interior demising walls without deductions for cutouts, curves, or architectural features. This method typically results in quoted dimensions greater than the dimensions that would be determined by using other accepted methods. The definition of "Unit" and the calculation method to be relied upon is set forth by 444 BRICKELL TWO, LLC (the "Developer") in Developer's prospectus which method may result in a square footage calculation less than the result of the calculation method used here. VICEROY BRANDS, LLC owns the mark and name Viceroy®. The Developer is permitted to use the name and logo of The Related Group® and Viceroy® pursuant to license agreements which are valid unless terminated or expired; neither The Related Group nor Viceroy Brands, LLC are the Developer. Consult the Developer's prospectus to learn what is included with Unit purchase and to understand Unit dimensions. 2024 © 444 BRICKELL TWO, LLC with all rights reserved.

VICEROY BRICKELL

THE RESIDENCES

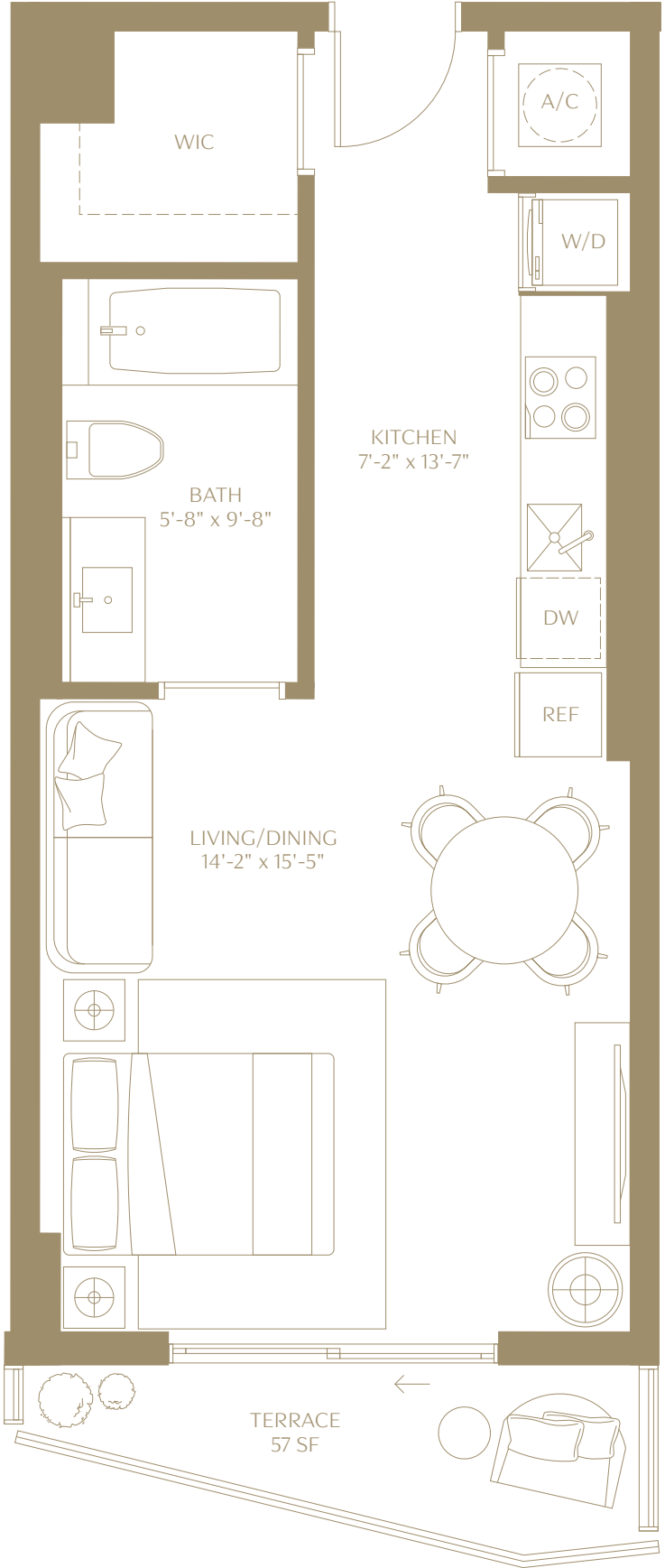
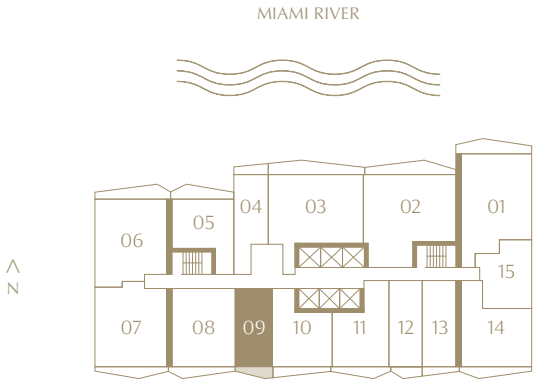
Residence 09

STUDIO | 1 BATHROOM
LEVELS 15 TO 42
SOUTH EXPOSURE

INTERIOR
485 SQ. FT. | 45.06 SQM

TERRACE
57 SQ. FT. | 5.30 SQM

TOTAL
542 SQ. FT. | 50.35 SQM



ⓘ The dimensions stated for this floor plan are approximate because there are various recognized methods for calculating the square footage of a unit. The square footage stated here is calculated from the exterior boundaries of the exterior walls to the centerline of interior demising walls without deductions for cutouts, curves, or architectural features. This method typically results in quoted dimensions greater than the dimensions that would be determined by using other accepted methods. The definition of "Unit" and the calculation method to be relied upon is set forth by 444 BRICKELL TWO, LLC (the "Developer") in Developer's prospectus which method may result in a square footage calculation less than the result of the calculation method used here. VICEROY BRANDS, LLC owns the mark and name Viceroy®. The Developer is permitted to use the name and logo of The Related Group® and Viceroy® pursuant to license agreements which are valid unless terminated or expired; neither The Related Group nor Viceroy Brands, LLC are the Developer. Consult the Developer's prospectus to learn what is included with Unit purchase and to understand Unit dimensions. 2024 © 444 BRICKELL TWO, LLC with all rights reserved.

VICEROY BRICKELL

THE RESIDENCES

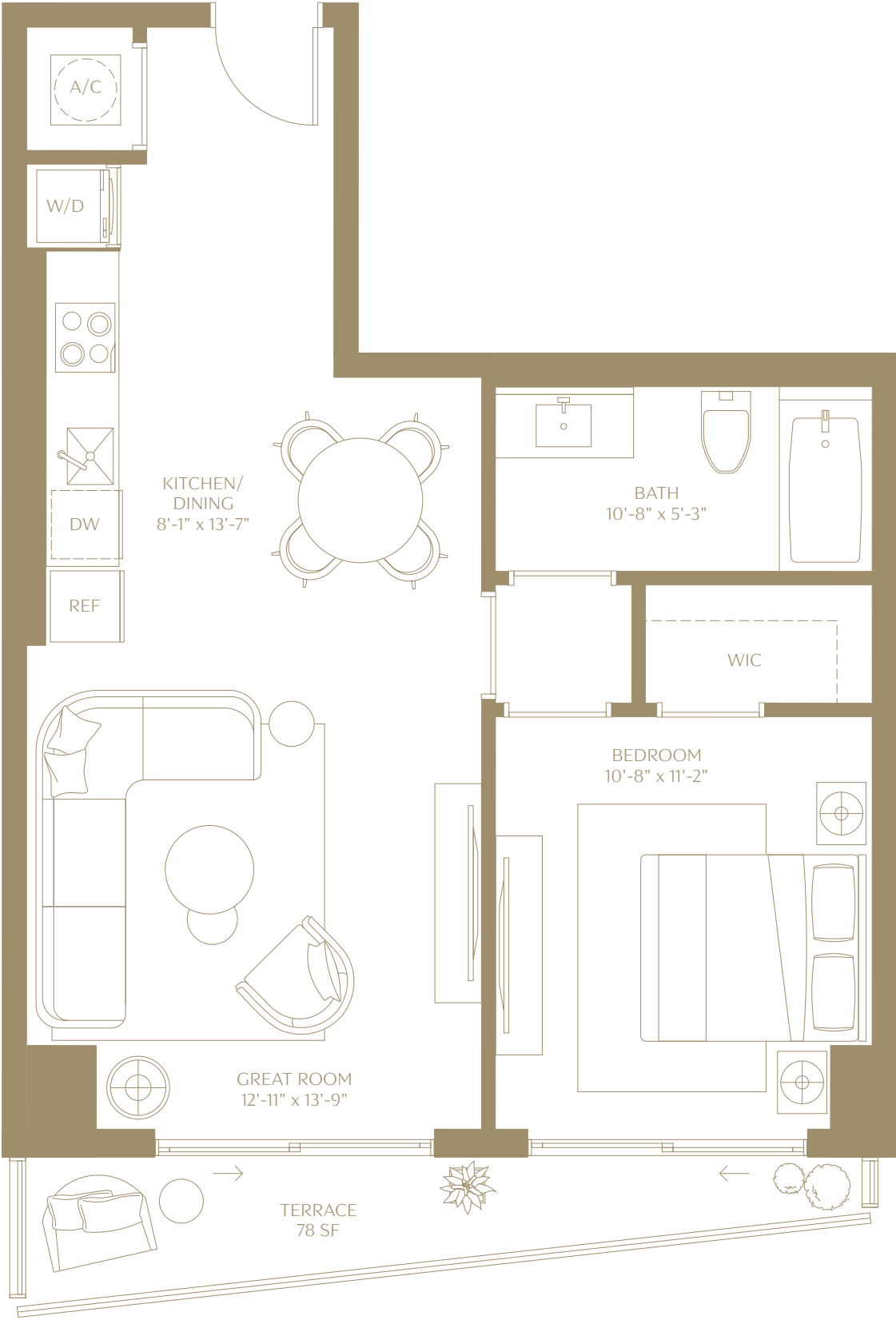
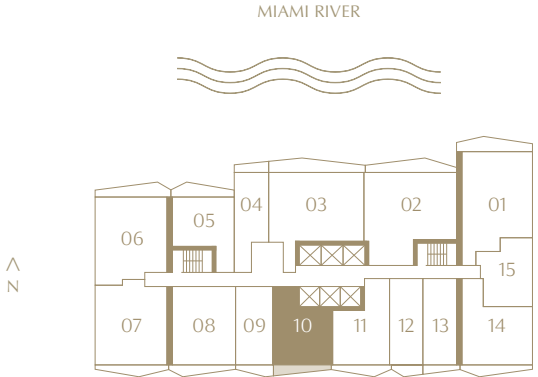
Residence 10

1 BEDROOM | 1 BATHROOM
LEVELS 15 TO 42
SOUTH EXPOSURE

INTERIOR
686 SQ. FT. | 63.73 SQM

TERRACE
78 SQ. FT. | 7.25 SQM

TOTAL
764 SQ. FT. | 70.98 SQM



ⓘ The dimensions stated for this floor plan are approximate because there are various recognized methods for calculating the square footage of a unit. The square footage stated here is calculated from the exterior boundaries of the exterior walls to the centerline of interior demising walls without deductions for cutouts, curves, or architectural features. This method typically results in quoted dimensions greater than the dimensions that would be determined by using other accepted methods. The definition of "Unit" and the calculation method to be relied upon is set forth by 444 BRICKELL TWO, LLC (the "Developer") in Developer's prospectus which method may result in a square footage calculation less than the result of the calculation method used here. VICEROY BRANDS, LLC owns the mark and name Viceroy®. The Developer is permitted to use the name and logo of The Related Group® and Viceroy® pursuant to license agreements which are valid unless terminated or expired; neither The Related Group nor Viceroy Brands, LLC are the Developer. Consult the Developer's prospectus to learn what is included with Unit purchase and to understand Unit dimensions. 2024 © 444 BRICKELL TWO, LLC with all rights reserved.

VICEROY BRICKELL

THE RESIDENCES

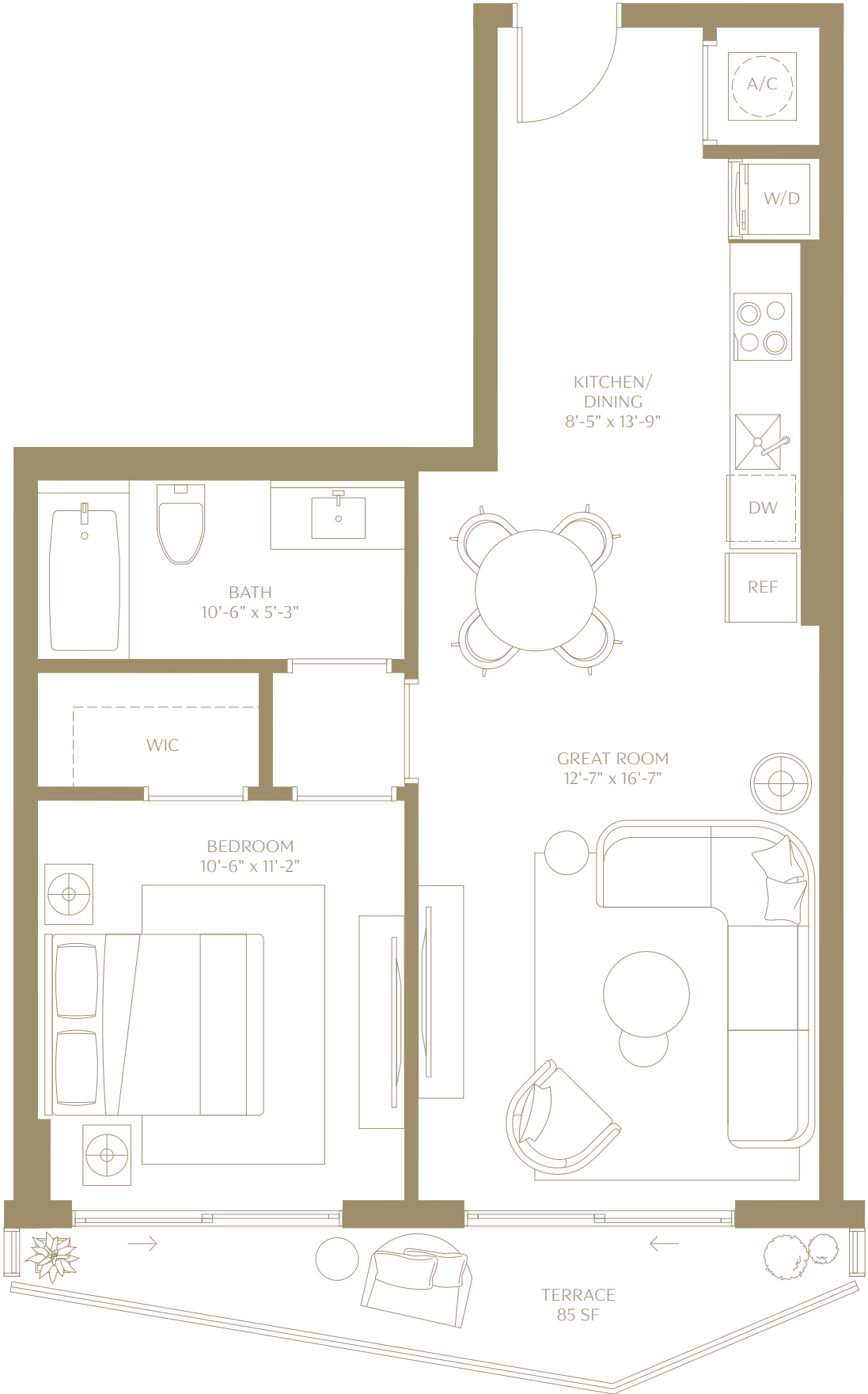
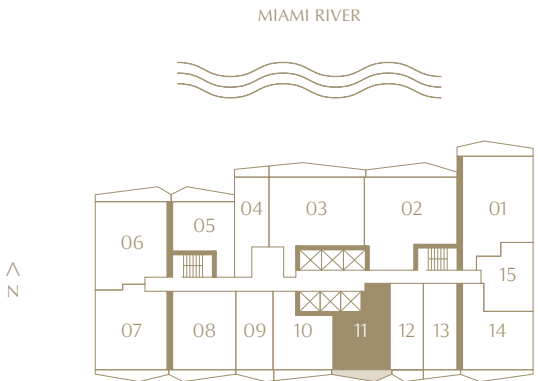
Residence 11

1 BEDROOM | 1 BATHROOM
LEVELS 15 TO 42
SOUTH EXPOSURE

INTERIOR
699 SQ. FT. | 64.94 SQM

TERRACE
85 SQ. FT. | 7.90 SQM

TOTAL
784 SQ. FT. | 72.84 SQM



ⓘ The dimensions stated for this floor plan are approximate because there are various recognized methods for calculating the square footage of a unit. The square footage stated here is calculated from the exterior boundaries of the exterior walls to the centerline of interior demising walls without deductions for cutouts, curves, or architectural features. This method typically results in quoted dimensions greater than the dimensions that would be determined by using other accepted methods. The definition of "Unit" and the calculation method to be relied upon is set forth by 444 BRICKELL TWO, LLC (the "Developer") in Developer's prospectus which method may result in a square footage calculation less than the result of the calculation method used here. VICEROY BRANDS, LLC owns the mark and name Viceroy®. The Developer is permitted to use the name and logo of The Related Group® and Viceroy® pursuant to license agreements which are valid unless terminated or expired; neither The Related Group nor Viceroy Brands, LLC are the Developer. Consult the Developer's prospectus to learn what is included with Unit purchase and to understand Unit dimensions. 2024 © 444 BRICKELL TWO, LLC with all rights reserved.

VICEROY BRICKELL

THE RESIDENCES

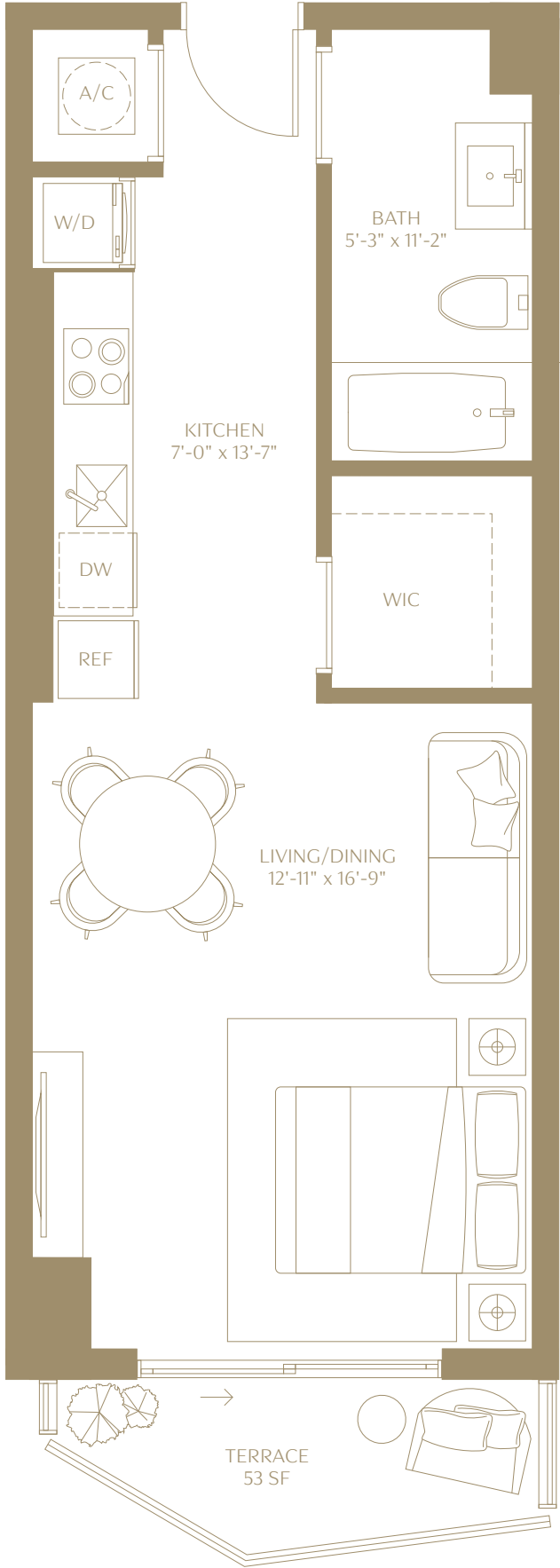
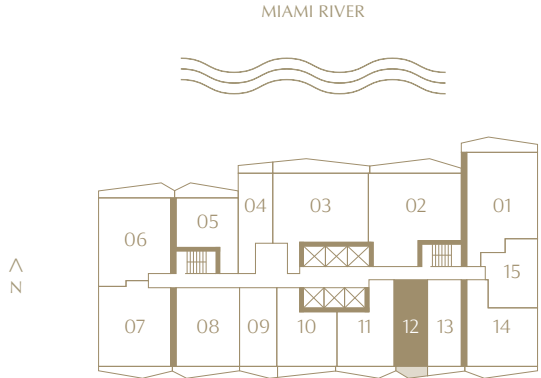
Residence 12

STUDIO | 1 BATHROOM
LEVELS 15 TO 42
SOUTH EXPOSURE

INTERIOR
489 SQ. FT. | 45.43 SQM

TERRACE
53 SQ. FT. | 4.92 SQM

TOTAL
542 SQ. FT. | 50.35 SQM



Ⓔ The dimensions stated for this floor plan are approximate because there are various recognized methods for calculating the square footage of a unit. The square footage stated here is calculated from the exterior boundaries of the exterior walls to the centerline of interior demising walls without deductions for cutouts, curves, or architectural features. This method typically results in quoted dimensions greater than the dimensions that would be determined by using other accepted methods. The definition of "Unit" and the calculation method to be relied upon is set forth by 444 BRICKELL TWO, LLC (the "Developer") in Developer's prospectus which method may result in a square footage calculation less than the result of the calculation method used here. VICEROY BRANDS, LLC owns the mark and name Viceroy®. The Developer is permitted to use the name and logo of The Related Group® and Viceroy® pursuant to license agreements which are valid unless terminated or expired; neither The Related Group nor Viceroy Brands, LLC are the Developer. Consult the Developer's prospectus to learn what is included with Unit purchase and to understand Unit dimensions. 2024 © 444 BRICKELL TWO, LLC with all rights reserved.

VICEROY BRICKELL

THE RESIDENCES

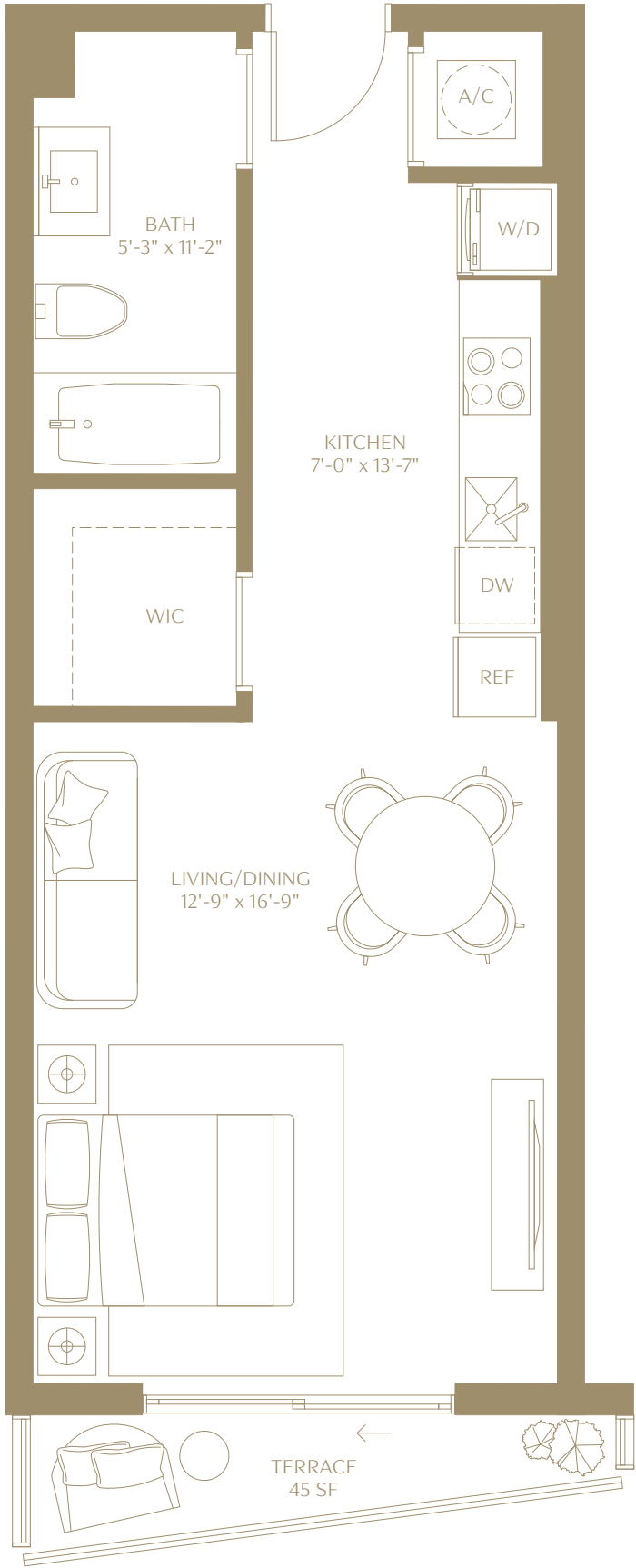
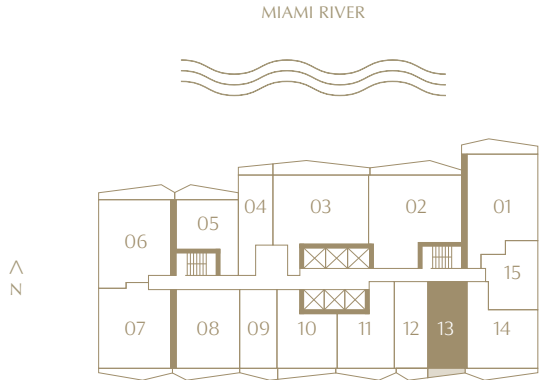
Residence 13

STUDIO | 1 BATHROOM
LEVELS 15 TO 42
SOUTH EXPOSURE

INTERIOR
539 SQ. FT. | 50.07 SQM

TERRACE
45 SQ. FT. | 4.18 SQM

TOTAL
584 SQ. FT. | 54.26 SQM



ⓘ The dimensions stated for this floor plan are approximate because there are various recognized methods for calculating the square footage of a unit. The square footage stated here is calculated from the exterior boundaries of the exterior walls to the centerline of interior demising walls without deductions for cutouts, curves, or architectural features. This method typically results in quoted dimensions greater than the dimensions that would be determined by using other accepted methods. The definition of "Unit" and the calculation method to be relied upon is set forth by 444 BRICKELL TWO, LLC (the "Developer") in Developer's prospectus which method may result in a square footage calculation less than the result of the calculation method used here. VICEROY BRANDS, LLC owns the mark and name Viceroy®. The Developer is permitted to use the name and logo of The Related Group® and Viceroy® pursuant to license agreements which are valid unless terminated or expired; neither The Related Group nor Viceroy Brands, LLC are the Developer. Consult the Developer's prospectus to learn what is included with Unit purchase and to understand Unit dimensions. 2024 © 444 BRICKELL TWO, LLC with all rights reserved.

VICEROY BRICKELL

THE RESIDENCES

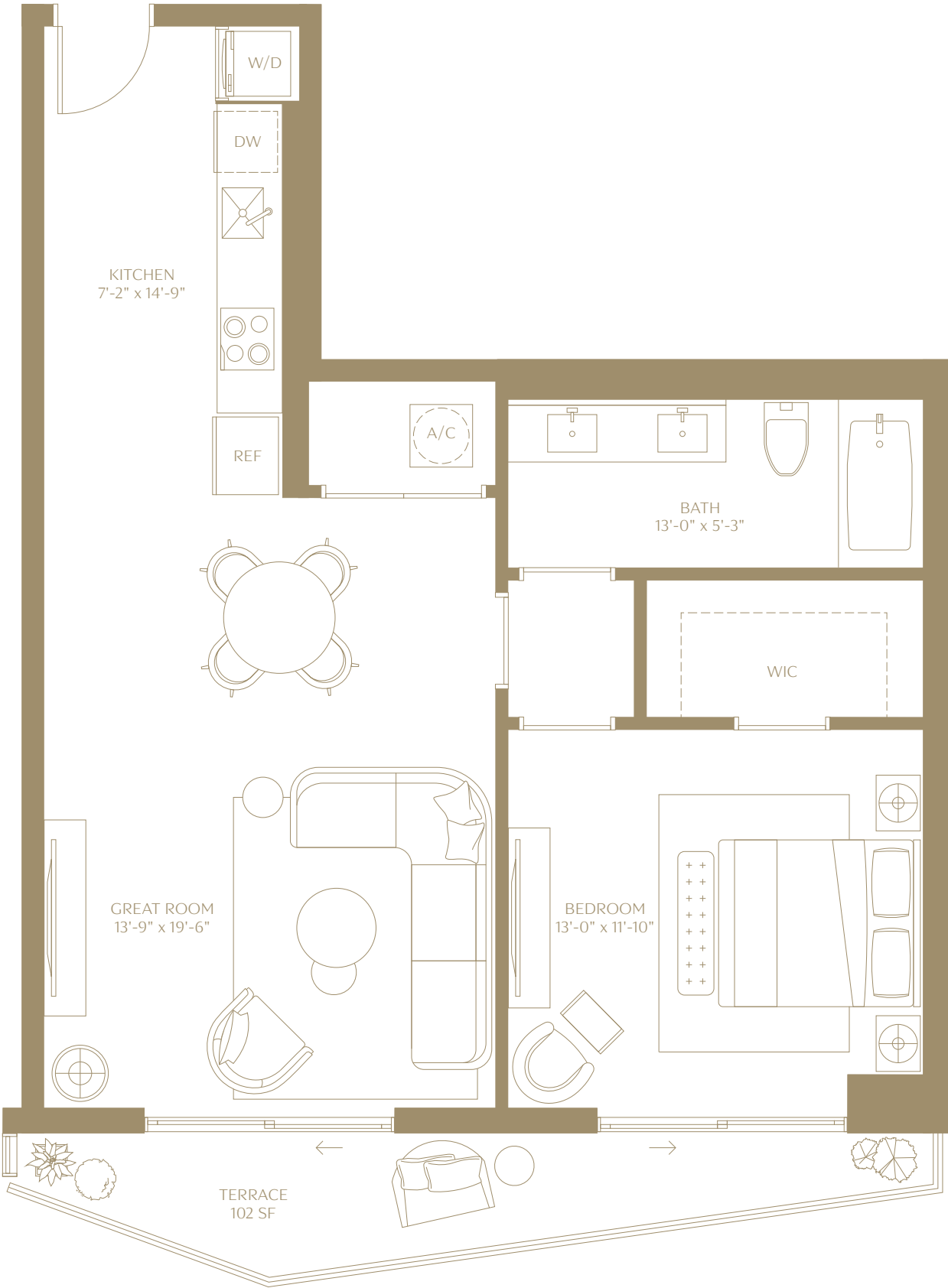
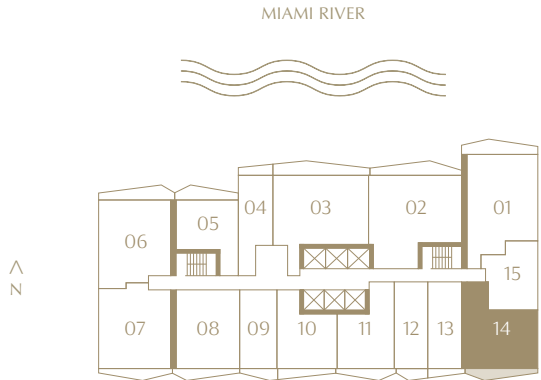
Residence 14

1 BEDROOM | 1 BATHROOM
LEVELS 15 TO 42
SOUTHEAST EXPOSURE

INTERIOR
833 SQ. FT. | 77.39 SQM

TERRACE
102 SQ. FT. | 9.48 SQM

TOTAL
935 SQ. FT. | 86.86 SQM



ⓘ The dimensions stated for this floor plan are approximate because there are various recognized methods for calculating the square footage of a unit. The square footage stated here is calculated from the exterior boundaries of the exterior walls to the centerline of interior demising walls without deductions for cutouts, curves, or architectural features. This method typically results in quoted dimensions greater than the dimensions that would be determined by using other accepted methods. The definition of "Unit" and the calculation method to be relied upon is set forth by 444 BRICKELL TWO, LLC (the "Developer") in Developer's prospectus which method may result in a square footage calculation less than the result of the calculation method used here. VICEROY BRANDS, LLC owns the mark and name Viceroy®. The Developer is permitted to use the name and logo of The Related Group® and Viceroy® pursuant to license agreements which are valid unless terminated or expired; neither The Related Group nor Viceroy Brands, LLC are the Developer. Consult the Developer's prospectus to learn what is included with Unit purchase and to understand Unit dimensions. 2024 © 444 BRICKELL TWO, LLC with all rights reserved.

VICEROY BRICKELL

THE RESIDENCES

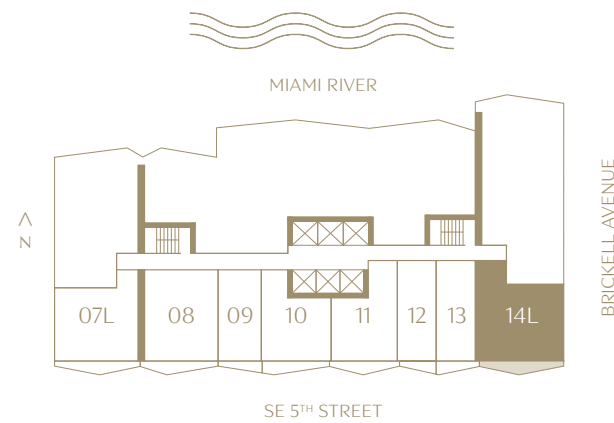
Residence 14L

1 BEDROOM | 1 BATHROOM
LEVELS 2 TO 12
SOUTHEAST EXPOSURE

INTERIOR
896 SQ. FT. | 83.24 SQM

TERRACE
102 SQ. FT. | 9.47 SQM

TOTAL
998 SQ. FT. | 92.72 SQM



The dimensions stated for this floor plan are approximate because there are various recognized methods for calculating the square footage of a unit. The square footage stated here is calculated from the exterior boundaries of the exterior walls to the centerline of interior demising walls without deductions for cutouts, curves, or architectural features. This method typically results in quoted dimensions greater than the dimensions that would be determined by using other accepted methods. The definition of "Unit" and the calculation method to be relied upon is set forth by 444 BRICKELL TWO, LLC (the "Developer") in Developer's prospectus which method may result in a square footage calculation less than the result of the calculation method used here. VICEROY BRANDS, LLC owns the mark and name Viceroy®. The Developer is permitted to use the name and logo of The Related Group® and Viceroy® pursuant to license agreements which are valid unless terminated or expired; neither The Related Group nor Viceroy Brands, LLC are the Developer. Consult the Developer's prospectus to learn what is included with Unit purchase and to understand Unit dimensions. 2024 © 444 BRICKELL TWO, LLC with all rights reserved.

VICEROY BRICKELL

THE RESIDENCES

Residence 15

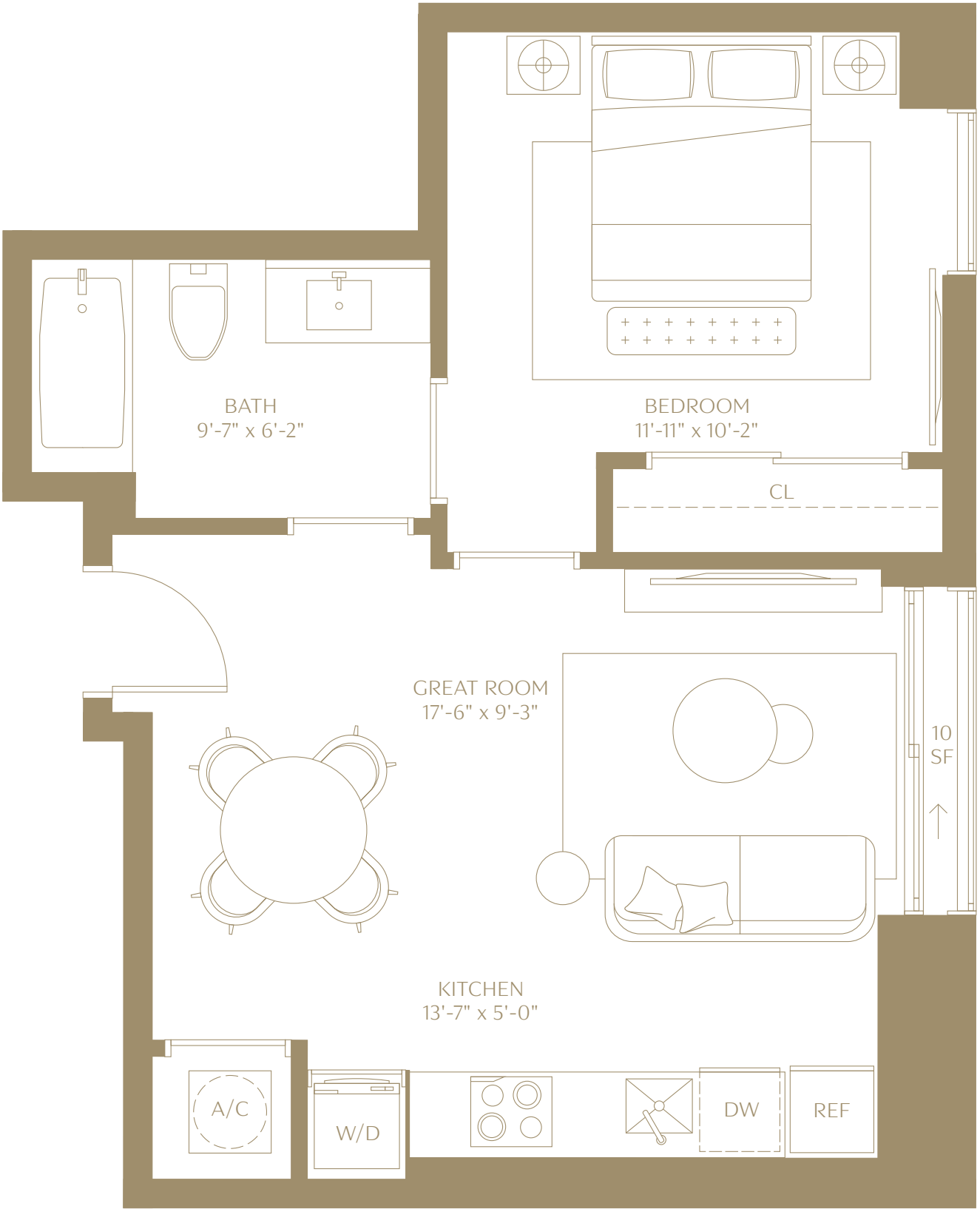
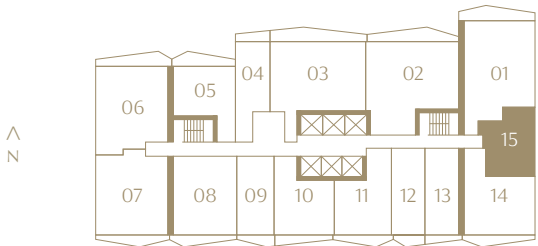
1 BEDROOM | 1 BATHROOM
LEVELS 15 TO 42
EAST EXPOSURE

INTERIOR
551 SQ. FT. | 51.19 SQM

TERRACE
10 SQ. FT. | 0.92 SQM

TOTAL
561 SQ. FT. | 52.11 SQM

MIAMI RIVER



ⓘ The dimensions stated for this floor plan are approximate because there are various recognized methods for calculating the square footage of a unit. The square footage stated here is calculated from the exterior boundaries of the exterior walls to the centerline of interior demising walls without deductions for cutouts, curves, or architectural features. This method typically results in quoted dimensions greater than the dimensions that would be determined by using other accepted methods. The definition of "Unit" and the calculation method to be relied upon is set forth by 444 BRICKELL TWO, LLC (the "Developer") in Developer's prospectus which method may result in a square footage calculation less than the result of the calculation method used here. VICEROY BRANDS, LLC owns the mark and name Viceroy®. The Developer is permitted to use the name and logo of The Related Group® and Viceroy® pursuant to license agreements which are valid unless terminated or expired; neither The Related Group nor Viceroy Brands, LLC are the Developer. Consult the Developer's prospectus to learn what is included with Unit purchase and to understand Unit dimensions. 2024 © 444 BRICKELL TWO, LLC with all rights reserved.

Penthouse 01

VICEROY BRICKELL THE RESIDENCES



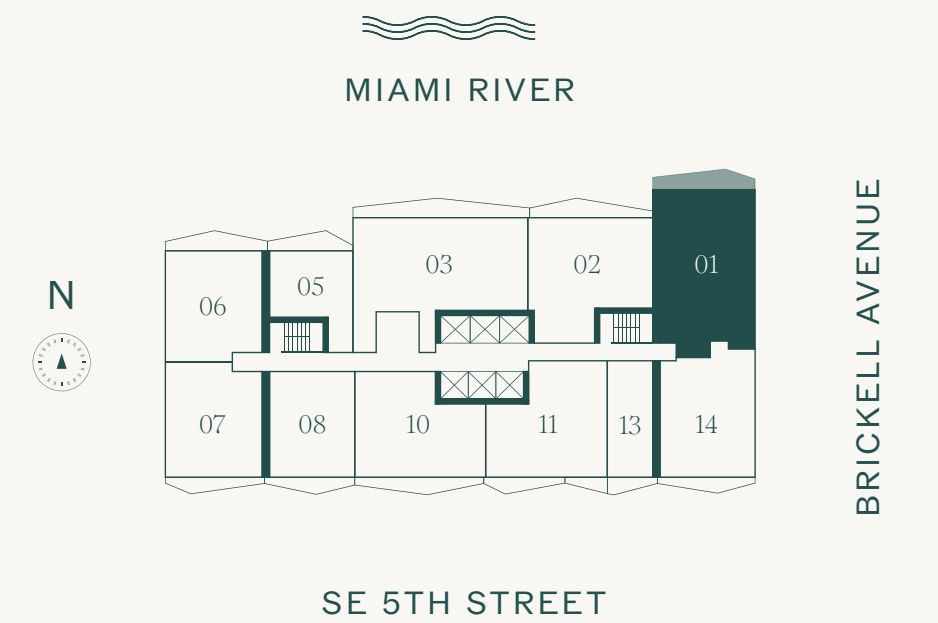
LEVEL 43
NORTH EAST EXPOSURE

3 BEDROOMS
3 BATHROOMS

INTERIOR
1,481 SF | 137.59 M²

TERRACE
141 SF | 13.09 M²

TOTAL
1,622 SF | 150.68 M²



ⓘ The dimensions stated for this floor plan are approximate because there are various recognized methods for calculating the square footage of a unit. The square footage stated here is calculated from the exterior boundaries of the exterior walls to the centerline of interior demising walls without deductions for cutouts, curves, or architectural features. This method typically results in quoted dimensions greater than the dimensions that would be determined by using other accepted methods. The definition of "Unit" and the calculation method to be relied upon is set forth by 444 BRICKELL TWO, LLC (the "Developer") in Developer's prospectus which method may result in a square footage calculation less than the result of the calculation method used here. VICEROY BRANDS, LLC owns the mark and name Viceroy®. The Developer is permitted to use the name and logo of The Related Group® and Viceroy® pursuant to license agreements which are valid unless terminated or expired; neither The Related Group nor Viceroy Brands, LLC are the Developer. Consult the Developer's prospectus to learn what is included with Unit purchase and to understand Unit dimensions. 2025 © 444 BRICKELL TWO, LLC with all rights reserved.

Penthouse 02

VICEROY BRICKELL
THE RESIDENCES



LEVEL 43
NORTH EXPOSURE

2 BEDROOMS
2 BATHROOMS

INTERIOR
1,286 SF | 119.47 M²

TERRACE
162 SF | 15.05 M²

TOTAL
1,448 SF | 134.52 M²



ⓘ The dimensions stated for this floor plan are approximate because there are various recognized methods for calculating the square footage of a unit. The square footage stated here is calculated from the exterior boundaries of the exterior walls to the centerline of interior demising walls without deductions for cutouts, curves, or architectural features. This method typically results in quoted dimensions greater than the dimensions that would be determined by using other accepted methods. The definition of "Unit" and the calculation method to be relied upon is set forth by 444 BRICKELL TWO, LLC (the "Developer") in Developer's prospectus which method may result in a square footage calculation less than the result of the calculation method used here. VICEROY BRANDS, LLC owns the mark and name Viceroy®. The Developer is permitted to use the name and logo of The Related Group® and Viceroy® pursuant to license agreements which are valid unless terminated or expired; neither The Related Group nor Viceroy Brands, LLC are the Developer. Consult the Developer's prospectus to learn what is included with Unit purchase and to understand Unit dimensions. 2025 © 444 BRICKELL TWO, LLC with all rights reserved.

Penthouse 03

VICEROY BRICKELL
THE RESIDENCES



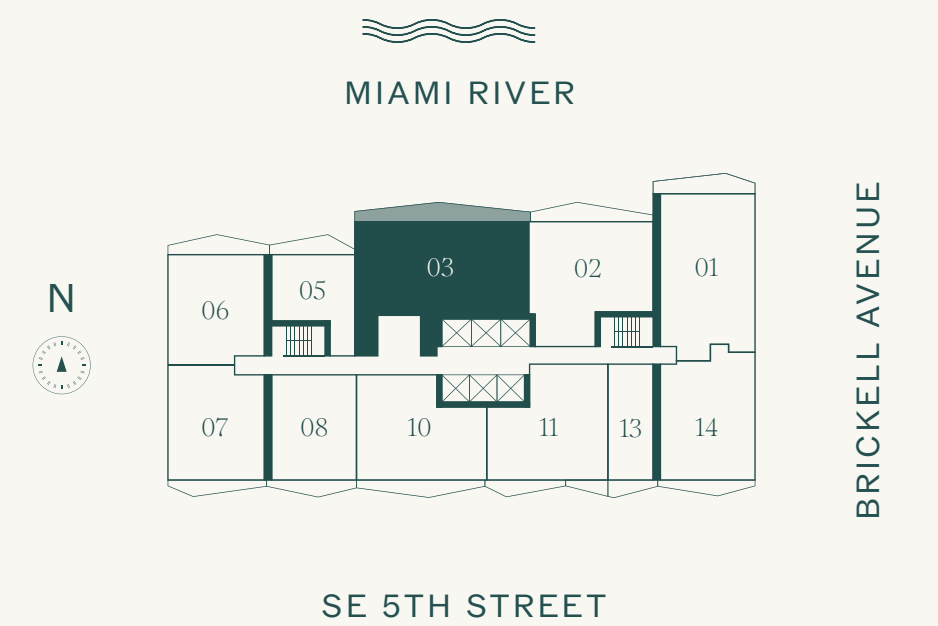
LEVEL 43
NORTH EXPOSURE

3 BEDROOMS
3 BATHROOMS

INTERIOR
1,755 SF | 163.04 M²

TERRACE
244 SF | 22.67 M²

TOTAL
1,999 SF | 185.71 M²



ⓘ The dimensions stated for this floor plan are approximate because there are various recognized methods for calculating the square footage of a unit. The square footage stated here is calculated from the exterior boundaries of the exterior walls to the centerline of interior demising walls without deductions for cutouts, curves, or architectural features. This method typically results in quoted dimensions greater than the dimensions that would be determined by using other accepted methods. The definition of "Unit" and the calculation method to be relied upon is set forth by 444 BRICKELL TWO, LLC (the "Developer") in Developer's prospectus which method may result in a square footage calculation less than the result of the calculation method used here. VICEROY BRANDS, LLC owns the mark and name Viceroy®. The Developer is permitted to use the name and logo of The Related Group® and Viceroy® pursuant to license agreements which are valid unless terminated or expired; neither The Related Group nor Viceroy Brands, LLC are the Developer. Consult the Developer's prospectus to learn what is included with Unit purchase and to understand Unit dimensions. 2025 © 444 BRICKELL TWO, LLC with all rights reserved.

Penthouse 05

VICEROY BRICKELL
THE RESIDENCES



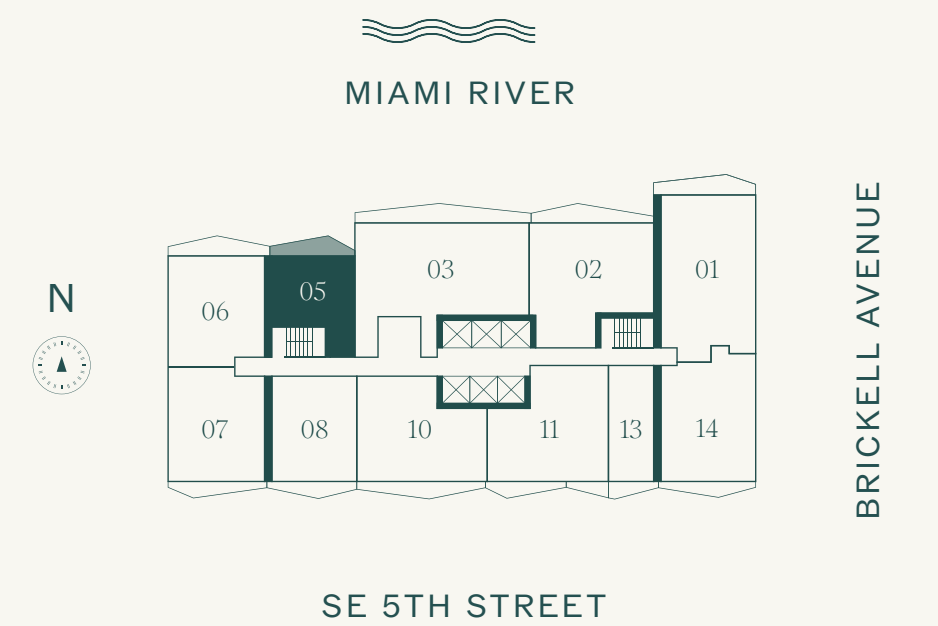
LEVEL 43
NORTH EXPOSURE

1 BEDROOM
1 BATHROOM

INTERIOR
670 SF | 62.25 M²

TERRACE
113 SF | 10.50 M²

TOTAL
783 SF | 72.75 M²



ⓘ The dimensions stated for this floor plan are approximate because there are various recognized methods for calculating the square footage of a unit. The square footage stated here is calculated from the exterior boundaries of the exterior walls to the centerline of interior demising walls without deductions for cutouts, curves, or architectural features. This method typically results in quoted dimensions greater than the dimensions that would be determined by using other accepted methods. The definition of "Unit" and the calculation method to be relied upon is set forth by 444 BRICKELL TWO, LLC (the "Developer") in Developer's prospectus which method may result in a square footage calculation less than the result of the calculation method used here. VICEROY BRANDS, LLC owns the mark and name Viceroy®. The Developer is permitted to use the name and logo of The Related Group® and Viceroy® pursuant to license agreements which are valid unless terminated or expired; neither The Related Group nor Viceroy Brands, LLC are the Developer. Consult the Developer's prospectus to learn what is included with Unit purchase and to understand Unit dimensions. 2025 © 444 BRICKELL TWO, LLC with all rights reserved.

Penthouse 06

VICEROY BRICKELL THE RESIDENCES



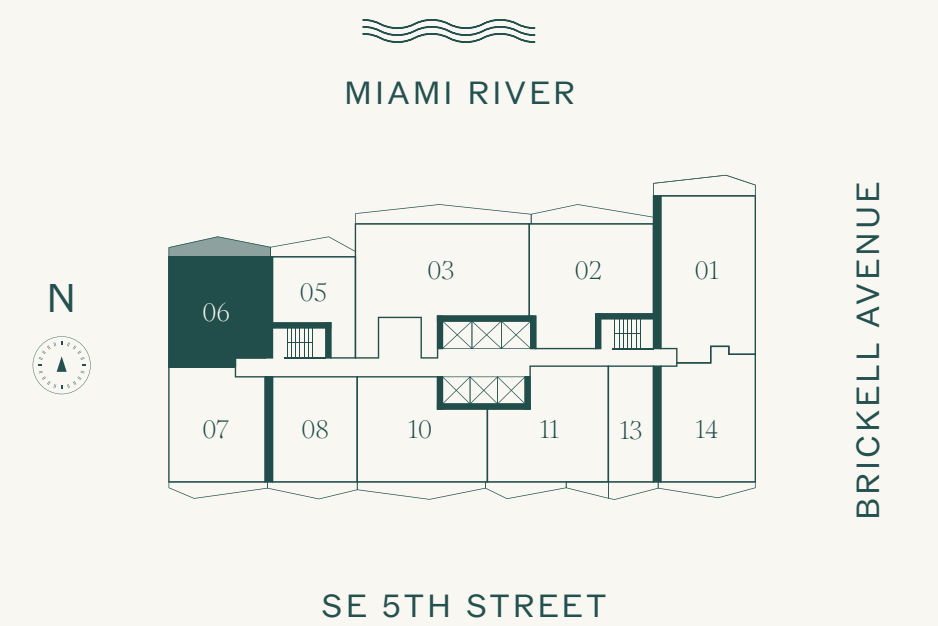
LEVEL 43
NORTH WEST EXPOSURE

2 BEDROOMS
2 BATHROOMS

INTERIOR
1,041 SF | 96.71 M²

TERRACE
137 SF | 12.73 M²

TOTAL
1,178 SF | 109.44 M²



ⓘ The dimensions stated for this floor plan are approximate because there are various recognized methods for calculating the square footage of a unit. The square footage stated here is calculated from the exterior boundaries of the exterior walls to the centerline of interior demising walls without deductions for cutouts, curves, or architectural features. This method typically results in quoted dimensions greater than the dimensions that would be determined by using other accepted methods. The definition of "Unit" and the calculation method to be relied upon is set forth by 444 BRICKELL TWO, LLC (the "Developer") in Developer's prospectus which method may result in a square footage calculation less than the result of the calculation method used here. VICEROY BRANDS, LLC owns the mark and name Viceroy®. The Developer is permitted to use the name and logo of The Related Group® and Viceroy® pursuant to license agreements which are valid unless terminated or expired; neither The Related Group nor Viceroy Brands, LLC are the Developer. Consult the Developer's prospectus to learn what is included with Unit purchase and to understand Unit dimensions. 2025 © 444 BRICKELL TWO, LLC with all rights reserved.

Penthouse 07

VICEROY BRICKELL
THE RESIDENCES



LEVEL 43
SOUTH WEST EXPOSURE

2 BEDROOMS
2 BATHROOMS

INTERIOR
1,030 SF | 95.69 M²

TERRACE
104 SF | 9.66 M²

TOTAL
1,134 SF | 105.35 M²



ⓘ The dimensions stated for this floor plan are approximate because there are various recognized methods for calculating the square footage of a unit. The square footage stated here is calculated from the exterior boundaries of the exterior walls to the centerline of interior demising walls without deductions for cutouts, curves, or architectural features. This method typically results in quoted dimensions greater than the dimensions that would be determined by using other accepted methods. The definition of "Unit" and the calculation method to be relied upon is set forth by 444 BRICKELL TWO, LLC (the "Developer") in Developer's prospectus which method may result in a square footage calculation less than the result of the calculation method used here. VICEROY BRANDS, LLC owns the mark and name Viceroy®. The Developer is permitted to use the name and logo of The Related Group® and Viceroy® pursuant to license agreements which are valid unless terminated or expired; neither The Related Group nor Viceroy Brands, LLC are the Developer. Consult the Developer's prospectus to learn what is included with Unit purchase and to understand Unit dimensions. 2025 © 444 BRICKELL TWO, LLC with all rights reserved.

Penthouse 08

VICEROY BRICKELL
THE RESIDENCES



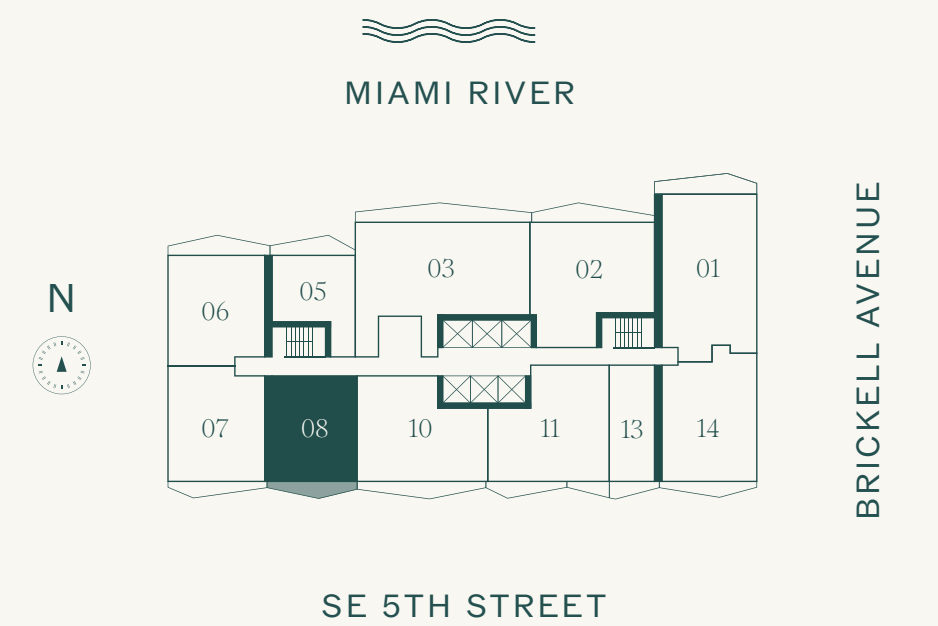
LEVEL 43
SOUTH EXPOSURE

1 BEDROOM
1 BATHROOM

INTERIOR
862 SF | 80.08 M²

TERRACE
96 SF | 8.92 M²

TOTAL
958 SF | 89 M²



ⓘ The dimensions stated for this floor plan are approximate because there are various recognized methods for calculating the square footage of a unit. The square footage stated here is calculated from the exterior boundaries of the exterior walls to the centerline of interior demising walls without deductions for cutouts, curves, or architectural features. This method typically results in quoted dimensions greater than the dimensions that would be determined by using other accepted methods. The definition of "Unit" and the calculation method to be relied upon is set forth by 444 BRICKELL TWO, LLC (the "Developer") in Developer's prospectus which method may result in a square footage calculation less than the result of the calculation method used here. VICEROY BRANDS, LLC owns the mark and name Viceroy®. The Developer is permitted to use the name and logo of The Related Group® and Viceroy® pursuant to license agreements which are valid unless terminated or expired; neither The Related Group nor Viceroy Brands, LLC are the Developer. Consult the Developer's prospectus to learn what is included with Unit purchase and to understand Unit dimensions. 2025 © 444 BRICKELL TWO, LLC with all rights reserved.

Penthouse 10

VICEROY BRICKELL
THE RESIDENCES



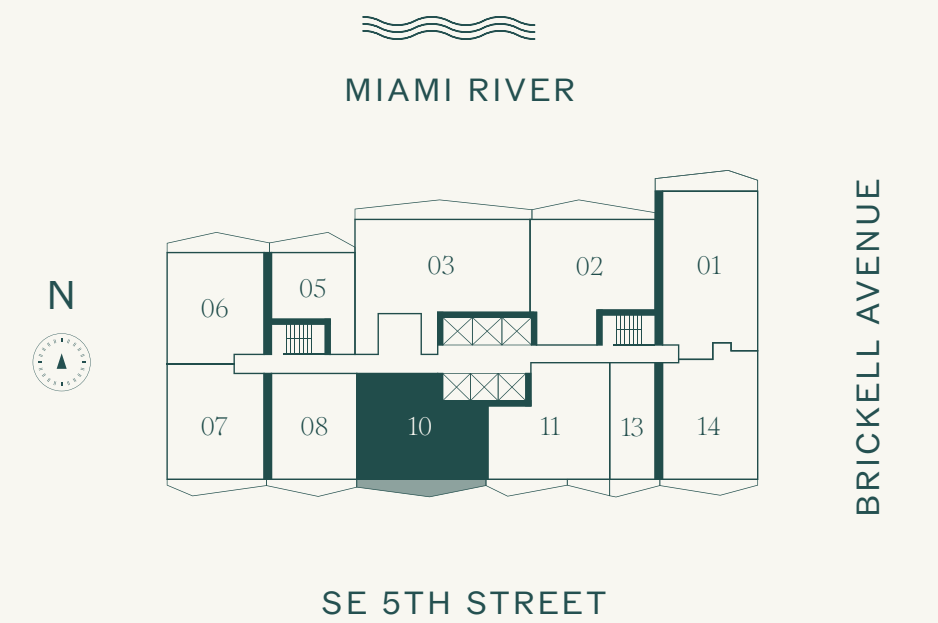
LEVEL 43
SOUTH EXPOSURE

2 BEDROOMS
2 BATHROOMS

INTERIOR
1,172 SF | 108.88 M²

TERRACE
135 SF | 12.54 M²

TOTAL
1,307 SF | 121.42 M²



ⓘ The dimensions stated for this floor plan are approximate because there are various recognized methods for calculating the square footage of a unit. The square footage stated here is calculated from the exterior boundaries of the exterior walls to the centerline of interior demising walls without deductions for cutouts, curves, or architectural features. This method typically results in quoted dimensions greater than the dimensions that would be determined by using other accepted methods. The definition of "Unit" and the calculation method to be relied upon is set forth by 444 BRICKELL TWO, LLC (the "Developer") in Developer's prospectus which method may result in a square footage calculation less than the result of the calculation method used here. VICEROY BRANDS, LLC owns the mark and name Viceroy®. The Developer is permitted to use the name and logo of The Related Group® and Viceroy® pursuant to license agreements which are valid unless terminated or expired; neither The Related Group nor Viceroy Brands, LLC are the Developer. Consult the Developer's prospectus to learn what is included with Unit purchase and to understand Unit dimensions. 2025 © 444 BRICKELL TWO, LLC with all rights reserved.

Penthouse 11

VICEROY BRICKELL THE RESIDENCES



LEVEL 43
SOUTH EXPOSURE

2 BEDROOMS
2 BATHROOMS

INTERIOR
1,188 SF | 110.37 M²

TERRACE
127 SF | 11.80 M²

TOTAL
1,315 SF | 122.17 M²



ⓘ The dimensions stated for this floor plan are approximate because there are various recognized methods for calculating the square footage of a unit. The square footage stated here is calculated from the exterior boundaries of the exterior walls to the centerline of interior demising walls without deductions for cutouts, curves, or architectural features. This method typically results in quoted dimensions greater than the dimensions that would be determined by using other accepted methods. The definition of "Unit" and the calculation method to be relied upon is set forth by 444 BRICKELL TWO, LLC (the "Developer") in Developer's prospectus which method may result in a square footage calculation less than the result of the calculation method used here. VICEROY BRANDS, LLC owns the mark and name Viceroy®. The Developer is permitted to use the name and logo of The Related Group® and Viceroy® pursuant to license agreements which are valid unless terminated or expired; neither The Related Group nor Viceroy Brands, LLC are the Developer. Consult the Developer's prospectus to learn what is included with Unit purchase and to understand Unit dimensions. 2025 © 444 BRICKELL TWO, LLC with all rights reserved.

Penthouse 13

VICEROY BRICKELL THE RESIDENCES



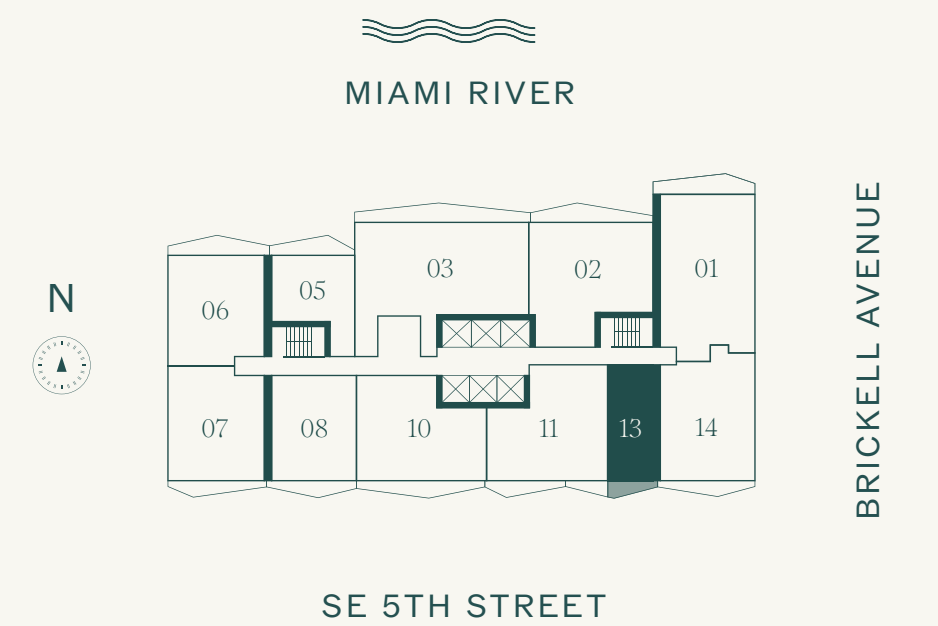
LEVEL 43
SOUTH EXPOSURE

STUDIO
1 BATHROOM

INTERIOR
539 SF | 50.07 M²

TERRACE
55 SF | 5.11 M²

TOTAL
594 SF | 55.18 M²



ⓘ The dimensions stated for this floor plan are approximate because there are various recognized methods for calculating the square footage of a unit. The square footage stated here is calculated from the exterior boundaries of the exterior walls to the centerline of interior demising walls without deductions for cutouts, curves, or architectural features. This method typically results in quoted dimensions greater than the dimensions that would be determined by using other accepted methods. The definition of "Unit" and the calculation method to be relied upon is set forth by 444 BRICKELL TWO, LLC (the "Developer") in Developer's prospectus which method may result in a square footage calculation less than the result of the calculation method used here. VICEROY BRANDS, LLC owns the mark and name Viceroy®. The Developer is permitted to use the name and logo of The Related Group® and Viceroy® pursuant to license agreements which are valid unless terminated or expired; neither The Related Group nor Viceroy Brands, LLC are the Developer. Consult the Developer's prospectus to learn what is included with Unit purchase and to understand Unit dimensions. 2025 © 444 BRICKELL TWO, LLC with all rights reserved.

Penthouse 14

VICEROY BRICKELL THE RESIDENCES



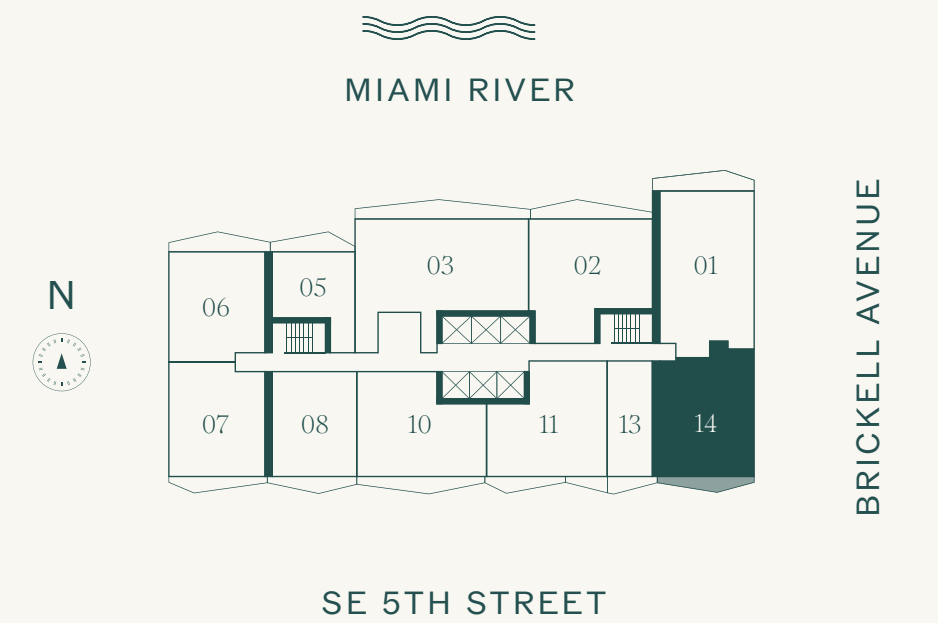
LEVEL 43
SOUTH EAST EXPOSURE

2 BEDROOMS
2 BATHROOMS

INTERIOR
1,132 SF | 105.17 M²

TERRACE
102 SF | 9.48 M²

TOTAL
1,234 SF | 114.65 M²



ⓘ The dimensions stated for this floor plan are approximate because there are various recognized methods for calculating the square footage of a unit. The square footage stated here is calculated from the exterior boundaries of the exterior walls to the centerline of interior demising walls without deductions for cutouts, curves, or architectural features. This method typically results in quoted dimensions greater than the dimensions that would be determined by using other accepted methods. The definition of "Unit" and the calculation method to be relied upon is set forth by 444 BRICKELL TWO, LLC (the "Developer") in Developer's prospectus which method may result in a square footage calculation less than the result of the calculation method used here. VICEROY BRANDS, LLC owns the mark and name Viceroy®. The Developer is permitted to use the name and logo of The Related Group® and Viceroy® pursuant to license agreements which are valid unless terminated or expired; neither The Related Group nor Viceroy Brands, LLC are the Developer. Consult the Developer's prospectus to learn what is included with Unit purchase and to understand Unit dimensions. 2025 © 444 BRICKELL TWO, LLC with all rights reserved.

Upper Penthouse 01

VICEROY BRICKELL
THE RESIDENCES



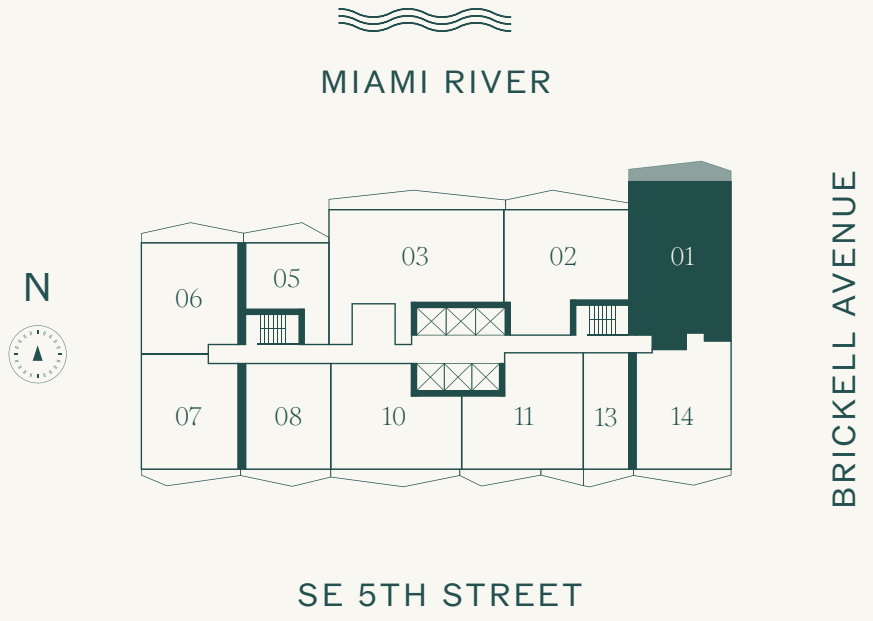
LEVEL 44
NORTH EAST EXPOSURE

3 BEDROOMS
3 BATHROOMS

INTERIOR
1,481 SF | 137.59 M²

TERRACE
141 SF | 13.09 M²

TOTAL
1,622 SF | 150.68 M²



ⓘ The dimensions stated for this floor plan are approximate because there are various recognized methods for calculating the square footage of a unit. The square footage stated here is calculated from the exterior boundaries of the exterior walls to the centerline of interior demising walls without deductions for cutouts, curves, or architectural features. This method typically results in quoted dimensions greater than the dimensions that would be determined by using other accepted methods. The definition of "Unit" and the calculation method to be relied upon is set forth by 444 BRICKELL TWO, LLC (the "Developer") in Developer's prospectus which method may result in a square footage calculation less than the result of the calculation method used here. VICEROY BRANDS, LLC owns the mark and name Viceroy®. The Developer is permitted to use the name and logo of The Related Group® and Viceroy® pursuant to license agreements which are valid unless terminated or expired; neither The Related Group nor Viceroy Brands, LLC are the Developer. Consult the Developer's prospectus to learn what is included with Unit purchase and to understand Unit dimensions. 2025 © 444 BRICKELL TWO, LLC with all rights reserved.

Upper Penthouse 02

VICEROY BRICKELL
THE RESIDENCES



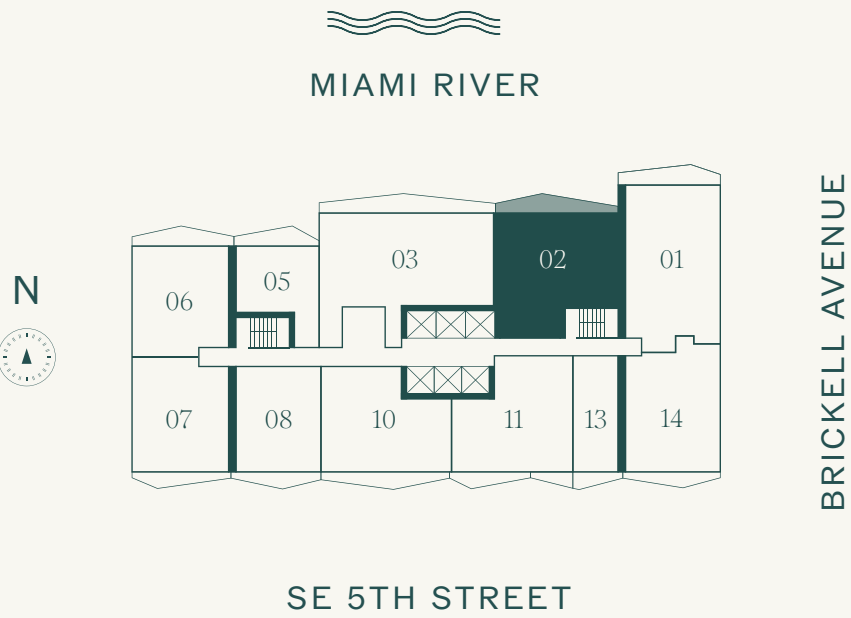
LEVEL 44
NORTH EXPOSURE

2 BEDROOMS
2 BATHROOMS

INTERIOR
1,286 SF | 119.47 M²

TERRACE
162 SF | 15.05 M²

TOTAL
1,448 SF | 134.52 M²



ⓘ The dimensions stated for this floor plan are approximate because there are various recognized methods for calculating the square footage of a unit. The square footage stated here is calculated from the exterior boundaries of the exterior walls to the centerline of interior demising walls without deductions for cutouts, curves, or architectural features. This method typically results in quoted dimensions greater than the dimensions that would be determined by using other accepted methods. The definition of "Unit" and the calculation method to be relied upon is set forth by 444 BRICKELL TWO, LLC (the "Developer") in Developer's prospectus which method may result in a square footage calculation less than the result of the calculation method used here. VICEROY BRANDS, LLC owns the mark and name Viceroy®. The Developer is permitted to use the name and logo of The Related Group® and Viceroy® pursuant to license agreements which are valid unless terminated or expired; neither The Related Group nor Viceroy Brands, LLC are the Developer. Consult the Developer's prospectus to learn what is included with Unit purchase and to understand Unit dimensions. 2025 © 444 BRICKELL TWO, LLC with all rights reserved.

Upper Penthouse 03

VICEROY BRICKELL
THE RESIDENCES



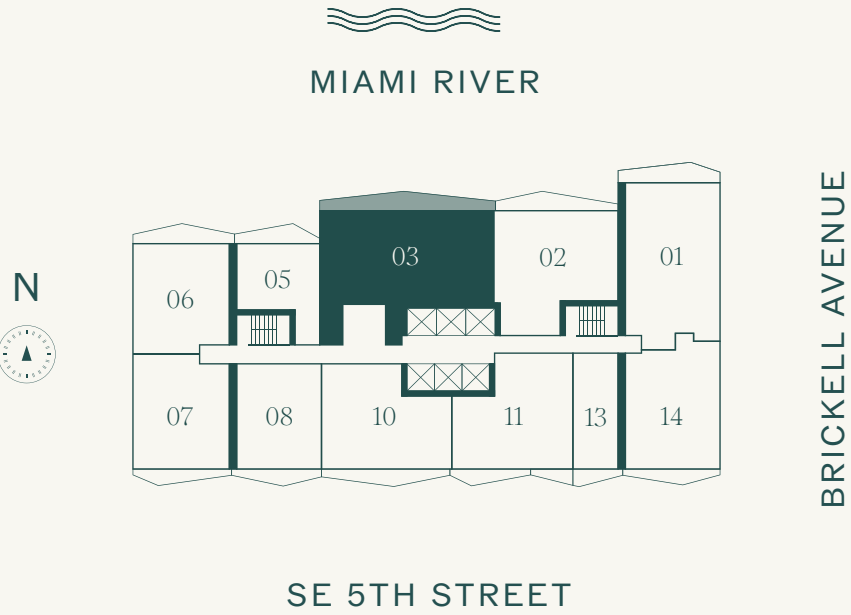
LEVEL 44
NORTH EXPOSURE

3 BEDROOMS
3 BATHROOMS

INTERIOR
1,755 SF | 163.04 M²

TERRACE
244 SF | 22.67 M²

TOTAL
1,999 SF | 185.71 M²



ⓘ The dimensions stated for this floor plan are approximate because there are various recognized methods for calculating the square footage of a unit. The square footage stated here is calculated from the exterior boundaries of the exterior walls to the centerline of interior demising walls without deductions for cutouts, curves, or architectural features. This method typically results in quoted dimensions greater than the dimensions that would be determined by using other accepted methods. The definition of "Unit" and the calculation method to be relied upon is set forth by 444 BRICKELL TWO, LLC (the "Developer") in Developer's prospectus which method may result in a square footage calculation less than the result of the calculation method used here. VICEROY BRANDS, LLC owns the mark and name Viceroy®. The Developer is permitted to use the name and logo of The Related Group® and Viceroy® pursuant to license agreements which are valid unless terminated or expired; neither The Related Group nor Viceroy Brands, LLC are the Developer. Consult the Developer's prospectus to learn what is included with Unit purchase and to understand Unit dimensions. 2025 © 444 BRICKELL TWO, LLC with all rights reserved.

Upper Penthouse 05

VICEROY BRICKELL
THE RESIDENCES



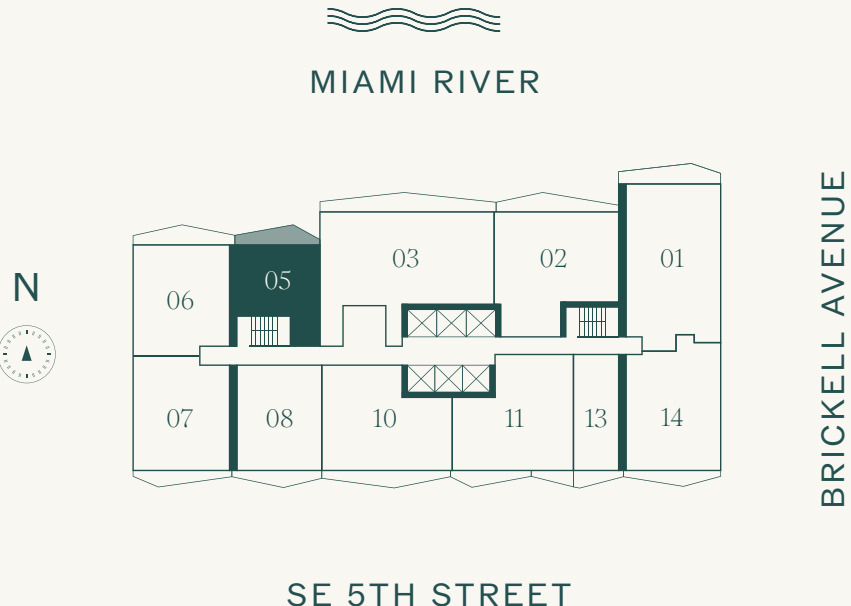
LEVEL 44
NORTH EXPOSURE

1 BEDROOM
1 BATHROOM

INTERIOR
670 SF | 62.25 M²

TERRACE
113 SF | 10.50 M²

TOTAL
783 SF | 72.75 M²



ⓘ The dimensions stated for this floor plan are approximate because there are various recognized methods for calculating the square footage of a unit. The square footage stated here is calculated from the exterior boundaries of the exterior walls to the centerline of interior demising walls without deductions for cutouts, curves, or architectural features. This method typically results in quoted dimensions greater than the dimensions that would be determined by using other accepted methods. The definition of "Unit" and the calculation method to be relied upon is set forth by 444 BRICKELL TWO, LLC (the "Developer") in Developer's prospectus which method may result in a square footage calculation less than the result of the calculation method used here. VICEROY BRANDS, LLC owns the mark and name Viceroy®. The Developer is permitted to use the name and logo of The Related Group® and Viceroy® pursuant to license agreements which are valid unless terminated or expired; neither The Related Group nor Viceroy Brands, LLC are the Developer. Consult the Developer's prospectus to learn what is included with Unit purchase and to understand Unit dimensions. 2025 © 444 BRICKELL TWO, LLC with all rights reserved.

Upper Penthouse 06

VICEROY BRICKELL
THE RESIDENCES



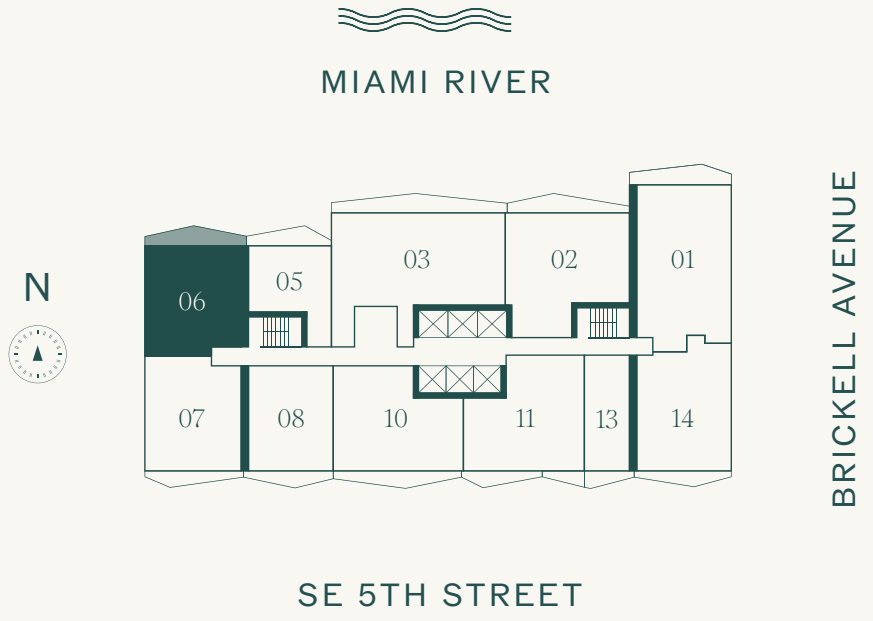
LEVEL 44
NORTH WEST EXPOSURE

2 BEDROOMS
2 BATHROOMS

INTERIOR
1,041 SF | 96.71 M²

TERRACE
137 SF | 12.73 M²

TOTAL
1,178 SF | 109.44 M²



ⓘ The dimensions stated for this floor plan are approximate because there are various recognized methods for calculating the square footage of a unit. The square footage stated here is calculated from the exterior boundaries of the exterior walls to the centerline of interior demising walls without deductions for cutouts, curves, or architectural features. This method typically results in quoted dimensions greater than the dimensions that would be determined by using other accepted methods. The definition of "Unit" and the calculation method to be relied upon is set forth by 444 BRICKELL TWO, LLC (the "Developer") in Developer's prospectus which method may result in a square footage calculation less than the result of the calculation method used here. VICEROY BRANDS, LLC owns the mark and name Viceroy®. The Developer is permitted to use the name and logo of The Related Group® and Viceroy® pursuant to license agreements which are valid unless terminated or expired; neither The Related Group nor Viceroy Brands, LLC are the Developer. Consult the Developer's prospectus to learn what is included with Unit purchase and to understand Unit dimensions. 2025 © 444 BRICKELL TWO, LLC with all rights reserved.

Upper Penthouse 07

VICEROY BRICKELL
THE RESIDENCES



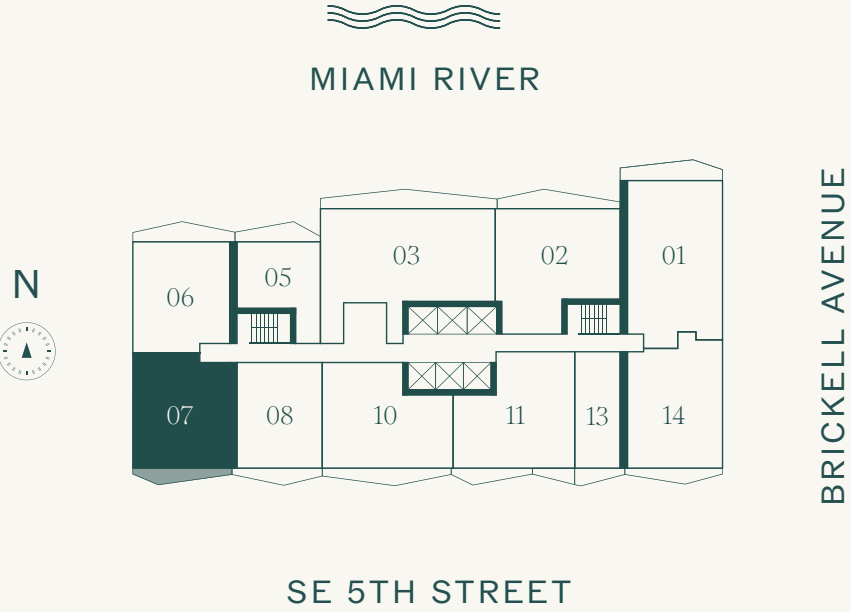
LEVEL 44
SOUTH WEST EXPOSURE

2 BEDROOMS
2 BATHROOMS

INTERIOR
1,030 SF | 95.69 M²

TERRACE
104 SF | 9.66 M²

TOTAL
1,134 SF | 105.35 M²



ⓘ The dimensions stated for this floor plan are approximate because there are various recognized methods for calculating the square footage of a unit. The square footage stated here is calculated from the exterior boundaries of the exterior walls to the centerline of interior demising walls without deductions for cutouts, curves, or architectural features. This method typically results in quoted dimensions greater than the dimensions that would be determined by using other accepted methods. The definition of "Unit" and the calculation method to be relied upon is set forth by 444 BRICKELL TWO, LLC (the "Developer") in Developer's prospectus which method may result in a square footage calculation less than the result of the calculation method used here. VICEROY BRANDS, LLC owns the mark and name Viceroy®. The Developer is permitted to use the name and logo of The Related Group® and Viceroy® pursuant to license agreements which are valid unless terminated or expired; neither The Related Group nor Viceroy Brands, LLC are the Developer. Consult the Developer's prospectus to learn what is included with Unit purchase and to understand Unit dimensions. 2025 © 444 BRICKELL TWO, LLC with all rights reserved.

Upper Penthouse 08

VICEROY BRICKELL
THE RESIDENCES



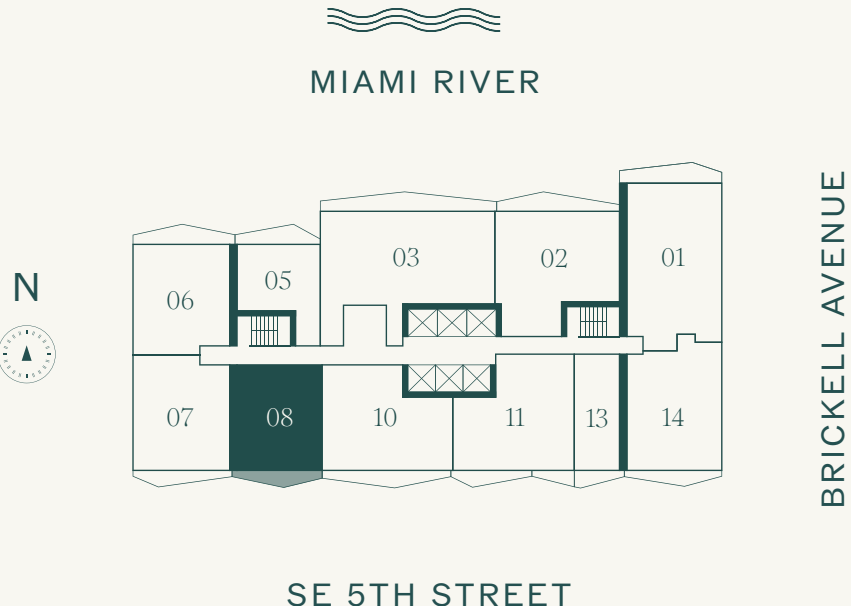
LEVEL 44
SOUTH EXPOSURE

1 BEDROOM
1 BATHROOM

INTERIOR
862 SF | 80.08 M²

TERRACE
96 SF | 8.92 M²

TOTAL
958 SF | 89 M²



ⓘ The dimensions stated for this floor plan are approximate because there are various recognized methods for calculating the square footage of a unit. The square footage stated here is calculated from the exterior boundaries of the exterior walls to the centerline of interior demising walls without deductions for cutouts, curves, or architectural features. This method typically results in quoted dimensions greater than the dimensions that would be determined by using other accepted methods. The definition of "Unit" and the calculation method to be relied upon is set forth by 444 BRICKELL TWO, LLC (the "Developer") in Developer's prospectus which method may result in a square footage calculation less than the result of the calculation method used here. VICEROY BRANDS, LLC owns the mark and name Viceroy®. The Developer is permitted to use the name and logo of The Related Group® and Viceroy® pursuant to license agreements which are valid unless terminated or expired; neither The Related Group nor Viceroy Brands, LLC are the Developer. Consult the Developer's prospectus to learn what is included with Unit purchase and to understand Unit dimensions. 2025 © 444 BRICKELL TWO, LLC with all rights reserved.

Upper Penthouse 10

VICEROY BRICKELL
THE RESIDENCES



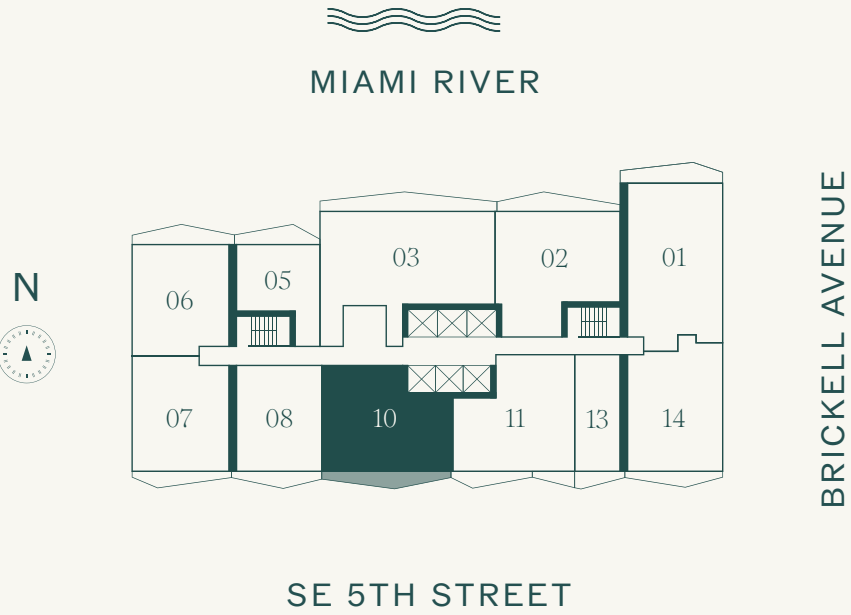
LEVEL 44
SOUTH EXPOSURE

2 BEDROOMS
2 BATHROOMS

INTERIOR
1,172 SF | 108.88 M²

TERRACE
135 SF | 12.54 M²

TOTAL
1,307 SF | 121.42 M²



ⓘ The dimensions stated for this floor plan are approximate because there are various recognized methods for calculating the square footage of a unit. The square footage stated here is calculated from the exterior boundaries of the exterior walls to the centerline of interior demising walls without deductions for cutouts, curves, or architectural features. This method typically results in quoted dimensions greater than the dimensions that would be determined by using other accepted methods. The definition of "Unit" and the calculation method to be relied upon is set forth by 444 BRICKELL TWO, LLC (the "Developer") in Developer's prospectus which method may result in a square footage calculation less than the result of the calculation method used here. VICEROY BRANDS, LLC owns the mark and name Viceroy®. The Developer is permitted to use the name and logo of The Related Group® and Viceroy® pursuant to license agreements which are valid unless terminated or expired; neither The Related Group nor Viceroy Brands, LLC are the Developer. Consult the Developer's prospectus to learn what is included with Unit purchase and to understand Unit dimensions. 2025 © 444 BRICKELL TWO, LLC with all rights reserved.

Upper Penthouse 11

VICEROY BRICKELL
THE RESIDENCES



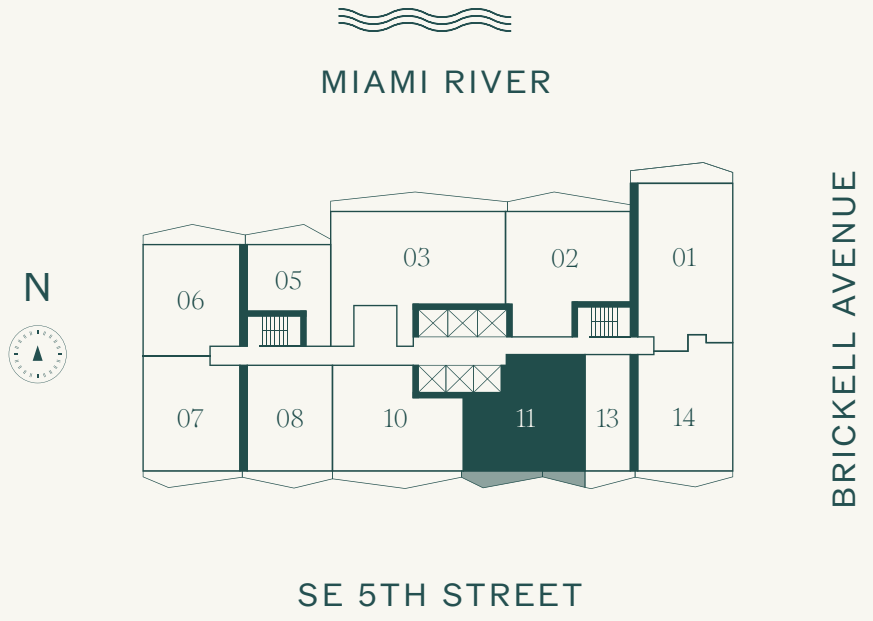
LEVEL 44
SOUTH EXPOSURE

2 BEDROOMS
2 BATHROOMS

INTERIOR
1,188 SF | 110.37 M²

TERRACE
127 SF | 11.80 M²

TOTAL
1,315 SF | 122.17 M²



ⓘ The dimensions stated for this floor plan are approximate because there are various recognized methods for calculating the square footage of a unit. The square footage stated here is calculated from the exterior boundaries of the exterior walls to the centerline of interior demising walls without deductions for cutouts, curves, or architectural features. This method typically results in quoted dimensions greater than the dimensions that would be determined by using other accepted methods. The definition of "Unit" and the calculation method to be relied upon is set forth by 444 BRICKELL TWO, LLC (the "Developer") in Developer's prospectus which method may result in a square footage calculation less than the result of the calculation method used here. VICEROY BRANDS, LLC owns the mark and name Viceroy®. The Developer is permitted to use the name and logo of The Related Group® and Viceroy® pursuant to license agreements which are valid unless terminated or expired; neither The Related Group nor Viceroy Brands, LLC are the Developer. Consult the Developer's prospectus to learn what is included with Unit purchase and to understand Unit dimensions. 2025 © 444 BRICKELL TWO, LLC with all rights reserved.

Upper Penthouse 13

VICEROY BRICKELL
THE RESIDENCES



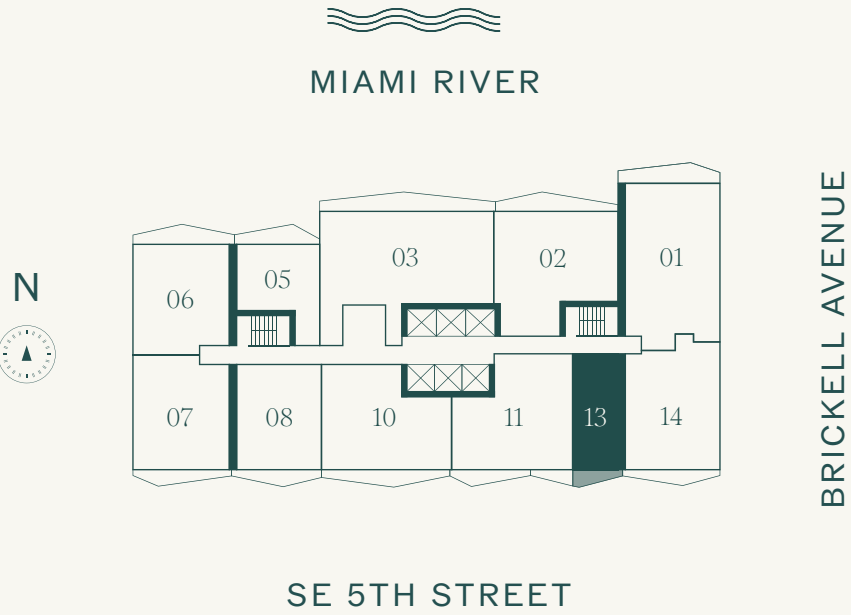
LEVEL 44
SOUTH EXPOSURE

STUDIO
1 BATHROOM

INTERIOR
539 SF | 50.07 M²

TERRACE
55 SF | 5.11 M²

TOTAL
594 SF | 55.18 M²



ⓘ The dimensions stated for this floor plan are approximate because there are various recognized methods for calculating the square footage of a unit. The square footage stated here is calculated from the exterior boundaries of the exterior walls to the centerline of interior demising walls without deductions for cutouts, curves, or architectural features. This method typically results in quoted dimensions greater than the dimensions that would be determined by using other accepted methods. The definition of "Unit" and the calculation method to be relied upon is set forth by 444 BRICKELL TWO, LLC (the "Developer") in Developer's prospectus which method may result in a square footage calculation less than the result of the calculation method used here. VICEROY BRANDS, LLC owns the mark and name Viceroy®. The Developer is permitted to use the name and logo of The Related Group® and Viceroy® pursuant to license agreements which are valid unless terminated or expired; neither The Related Group nor Viceroy Brands, LLC are the Developer. Consult the Developer's prospectus to learn what is included with Unit purchase and to understand Unit dimensions. 2025 © 444 BRICKELL TWO, LLC with all rights reserved.

Upper Penthouse 14

VICEROY BRICKELL THE RESIDENCES



LEVEL 44
SOUTH EAST EXPOSURE

2 BEDROOMS
2 BATHROOMS

INTERIOR
1,132 SF | 105.17 M²

TERRACE
102 SF | 9.48 M²

TOTAL
1,234 SF | 114.65 M²



ⓘ The dimensions stated for this floor plan are approximate because there are various recognized methods for calculating the square footage of a unit. The square footage stated here is calculated from the exterior boundaries of the exterior walls to the centerline of interior demising walls without deductions for cutouts, curves, or architectural features. This method typically results in quoted dimensions greater than the dimensions that would be determined by using other accepted methods. The definition of "Unit" and the calculation method to be relied upon is set forth by 444 BRICKELL TWO, LLC (the "Developer") in Developer's prospectus which method may result in a square footage calculation less than the result of the calculation method used here. VICEROY BRANDS, LLC owns the mark and name Viceroy®. The Developer is permitted to use the name and logo of The Related Group® and Viceroy® pursuant to license agreements which are valid unless terminated or expired; neither The Related Group nor Viceroy Brands, LLC are the Developer. Consult the Developer's prospectus to learn what is included with Unit purchase and to understand Unit dimensions. 2025 © 444 BRICKELL TWO, LLC with all rights reserved.